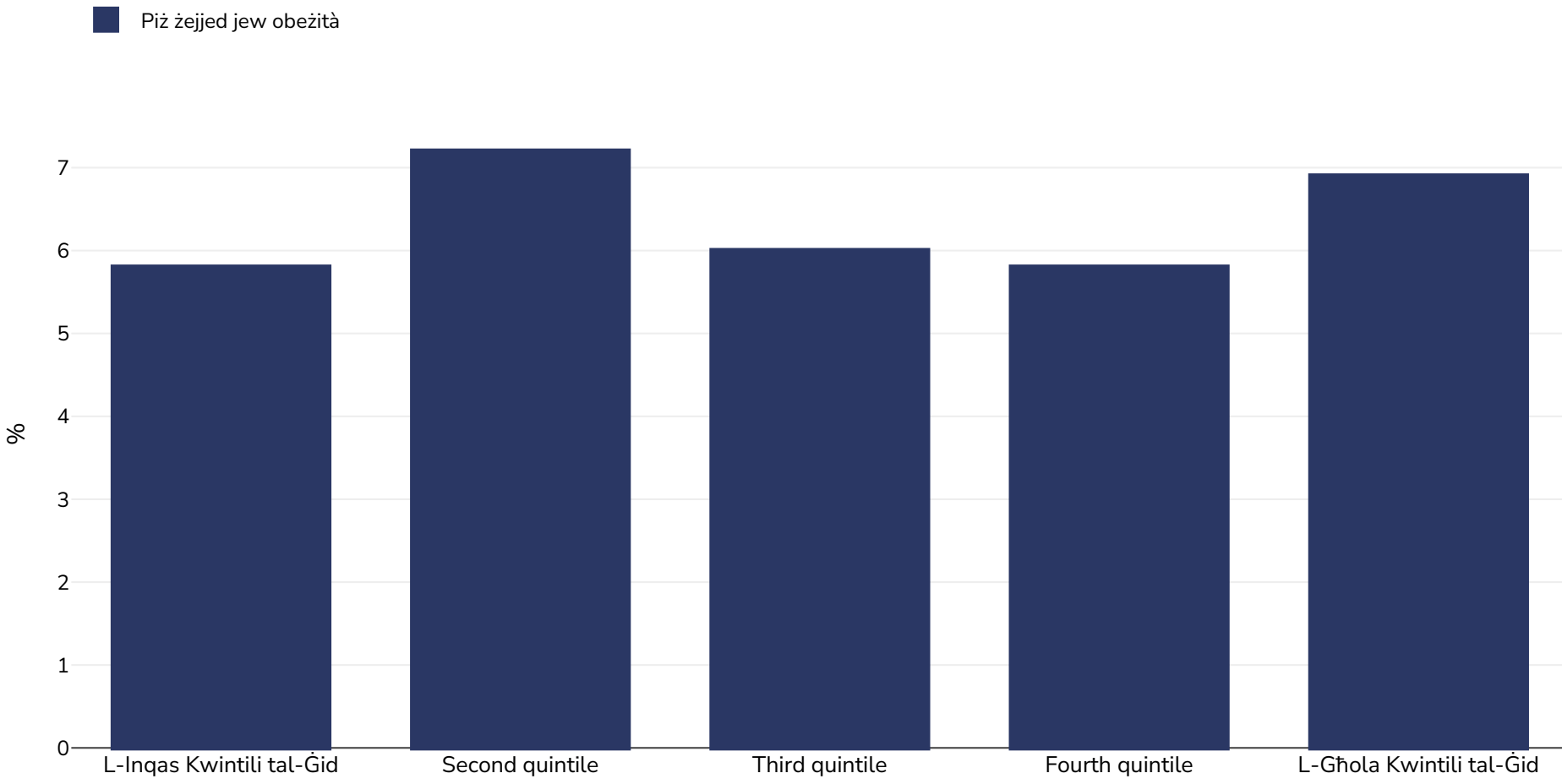


Il-Paragwaj: Overweight/obesity by socio-economic group

Infants, 1990



Id-daqs tal-kampjun: 3412

Referenzi: DHS: Encuesta nacional de demografía y salud 1990. Demographic and Health Surveys. Asuncion, Paraguay, 1991

Noti: UNICEF/WHO/World Bank Joint Child Malnutrition Estimates Expanded Database: Overweight (Survey Estimates), May 2023, New York. For more information about the methodology, please consult <https://data.unicef.org/resources/jme-2023-country-consultations/> Percentage of children under 5 years of age falling above 2 standard deviations (moderate and severe) from the median weight-for-height of the reference population.

Definizzjonijiet (disponibbli bl-Ingliż biss): =>+2SD