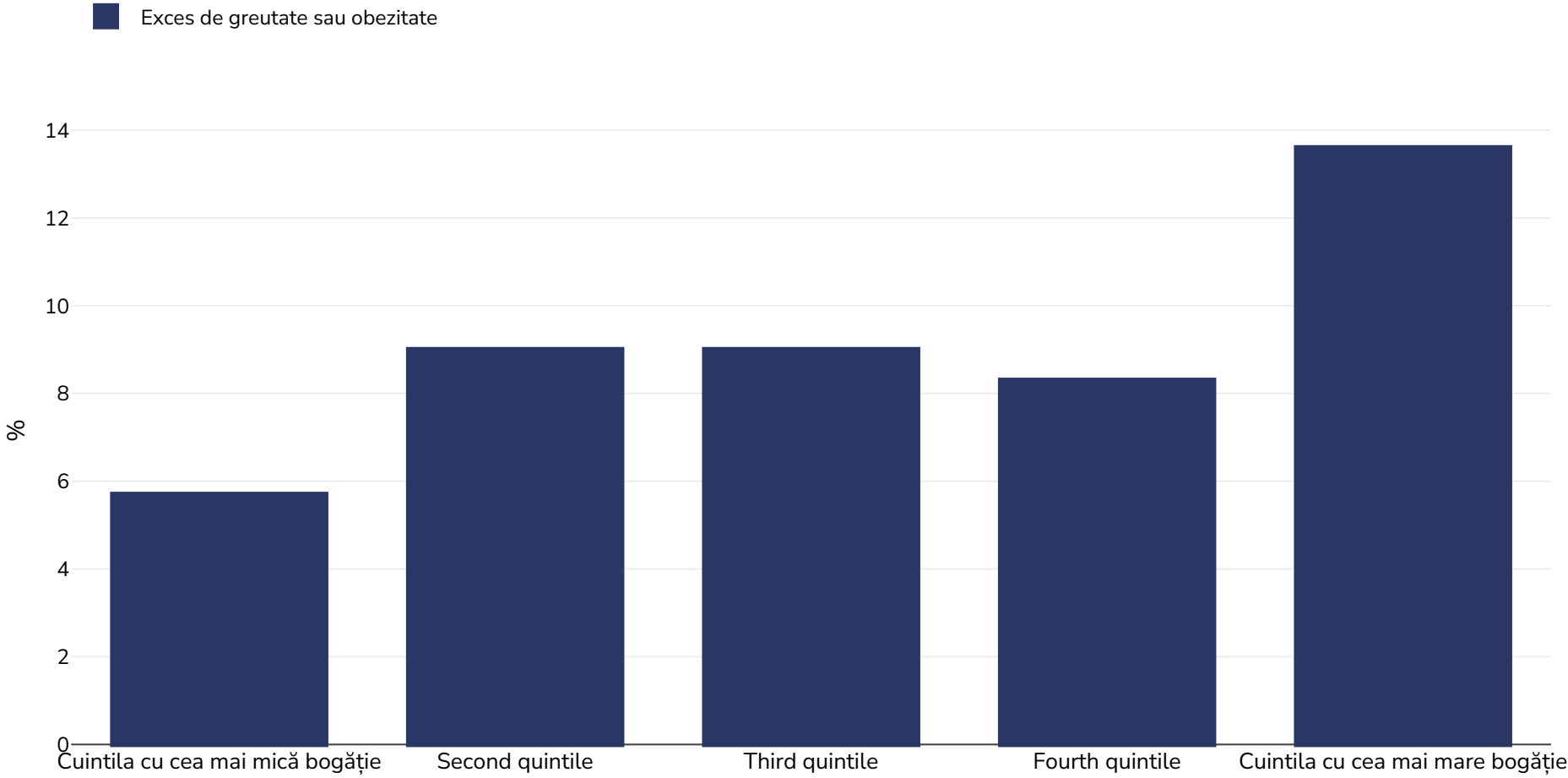


Samoa: Overweight/obesity by socio-economic group

Infants, 2019-2020



Dimensiunea eșantionului: 2524

Bibliografie: MICS: Samoa Demographic and Health Survey - Multiple Indicator Cluster Survey

Note (disponibile numai în limba engleză): UNICEF/WHO/World Bank Joint Child Malnutrition Estimates Expanded Database: Overweight (Survey Estimates), May 2023, New York. For more information about the methodology, please consult <https://data.unicef.org/resources/jme-2023-country-consultations/> Percentage of children under 5 years of age falling above 2 standard deviations (moderate and severe) from the median weight-for-height of the reference population.

Definiții (disponibile numai în limba engleză): =>+2SD