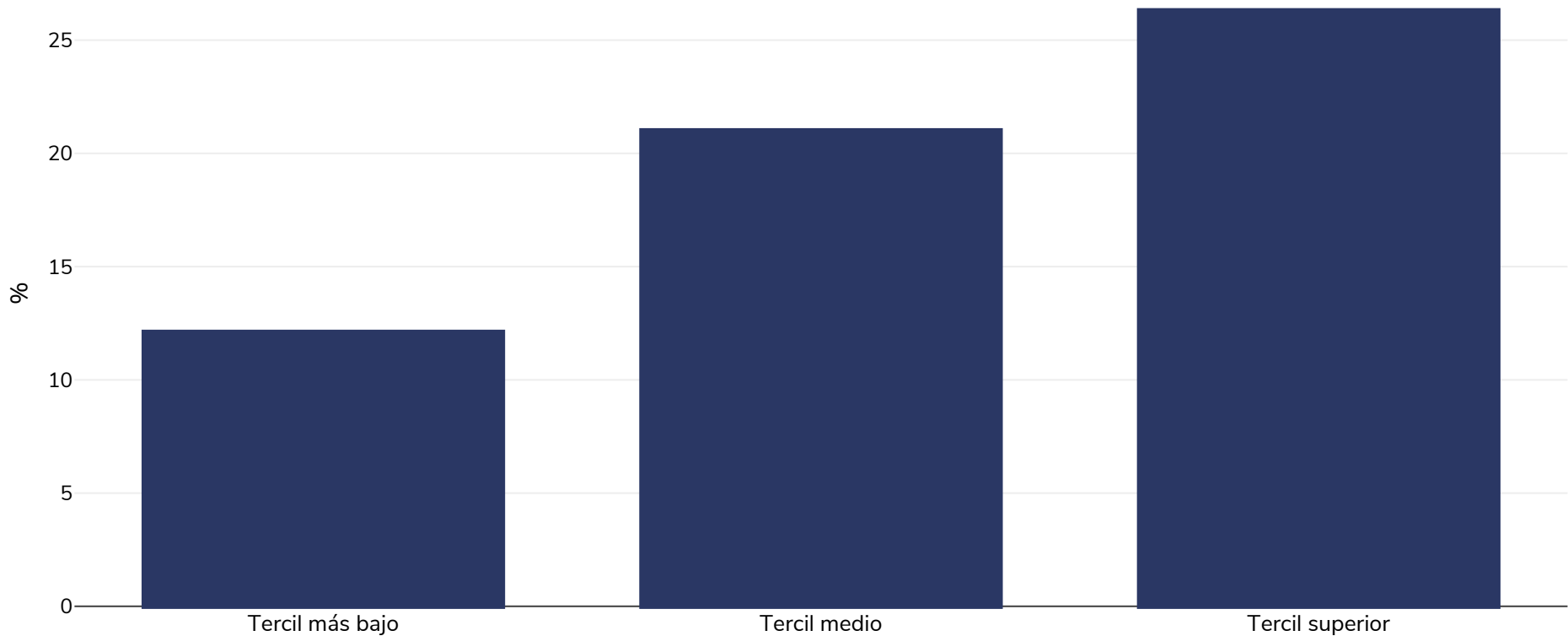


# Groenlandia: Overweight/obesity by socio-economic group

Hombres, 2005-2010

■ Obesidad



**Tipo de encuesta:** Medido

**Edad:** 18+

**Tamaño de la muestra:** 2757

**Zona abarcada:** Nacional

**Referencias:** Bjerregaard, P., Jørgensen, M. E. and The Greenland Population Study Group (2013), Prevalence of obesity among Inuit in Greenland and temporal trend by social position. *Am. J. Hum. Biol.*, 25: 335–340. doi: 10.1002/ajhb.22372

**Notas:** Social position was scored from information about education, housing density and ownership of specified household items.

A menos que se indique lo contrario, el sobrepeso se refiere a un IMC entre 25 kg y 29,9 kg/m<sup>2</sup> y la obesidad se refiere a un IMC superior a 30 kg/m<sup>2</sup>.