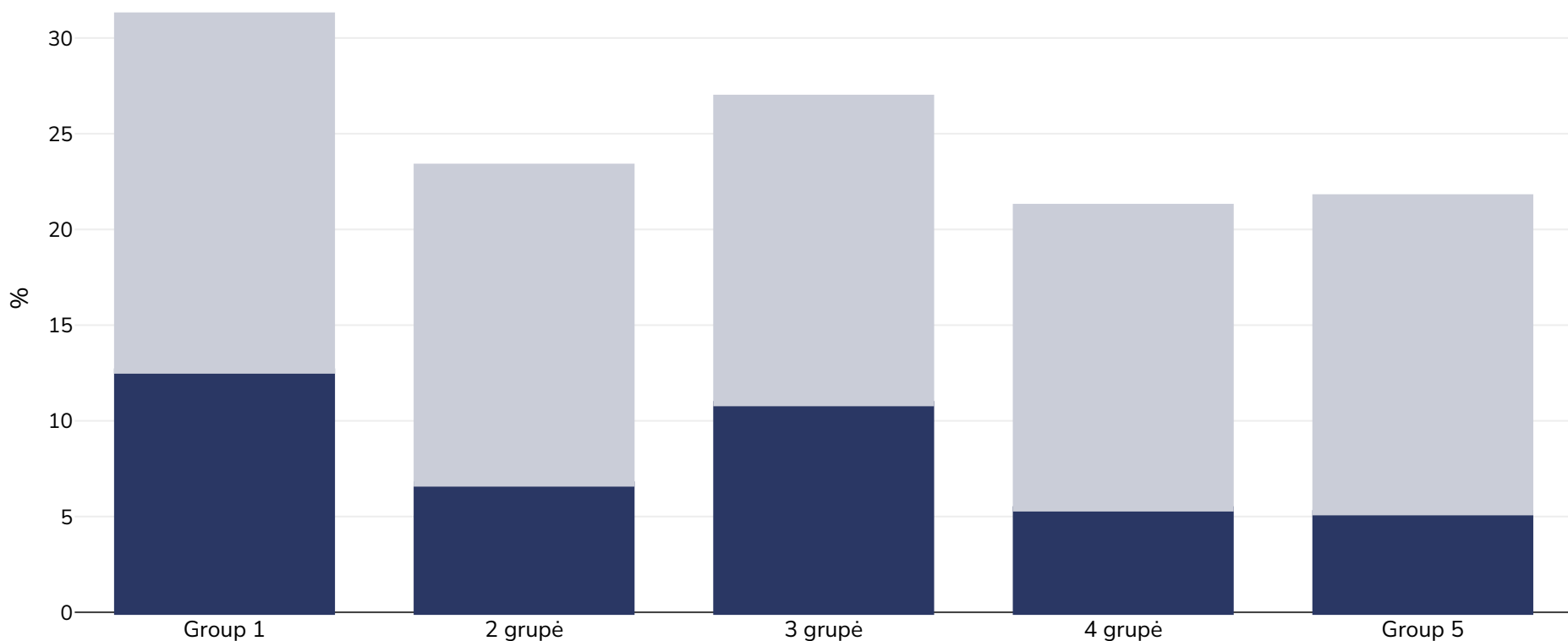


Australija: Overweight/obesity by socio-economic group

Merginos, 2017-2018

■ Nutukimas ■ Antsvoris



Tyrimo tipas: Išmatuotas

Amžius: 2-17

Imties dydis: 3769

Teritorija: Nacionalinis

Nuorodos: Australian National Health Survey 2017-18 Available at: <https://www.abs.gov.au/statistics/health/health-conditions-and-risks/national-health-survey-first-results/latest-release#chronic-conditions> (accessed 27.10.2022)

Pastabos (tik anglų k.): Socioeconomic areas are quintiles of Socio-Economic Indexes for Areas 2016 (SEIFA 2016), specifically the Index of Relative Socio-Economic Disadvantage (IRSD) (ABS 2018c). Lower socioeconomic areas have greater overall levels of disadvantage. "This index ranks areas on a continuum from most disadvantaged to least disadvantaged. A low score on this index indicates a high proportion of relatively disadvantaged people in an area. We cannot conclude that an area with a very high score has a large proportion of relatively advantaged people, as there are no variables in the index to indicate this. We can only conclude that such an area has a relatively low incidence of disadvantage."

Apibrėžimai (anglų k.): Group 1: Most disadvantaged areas Group 5: Least disadvantaged areas

Cutoffs: IOTF