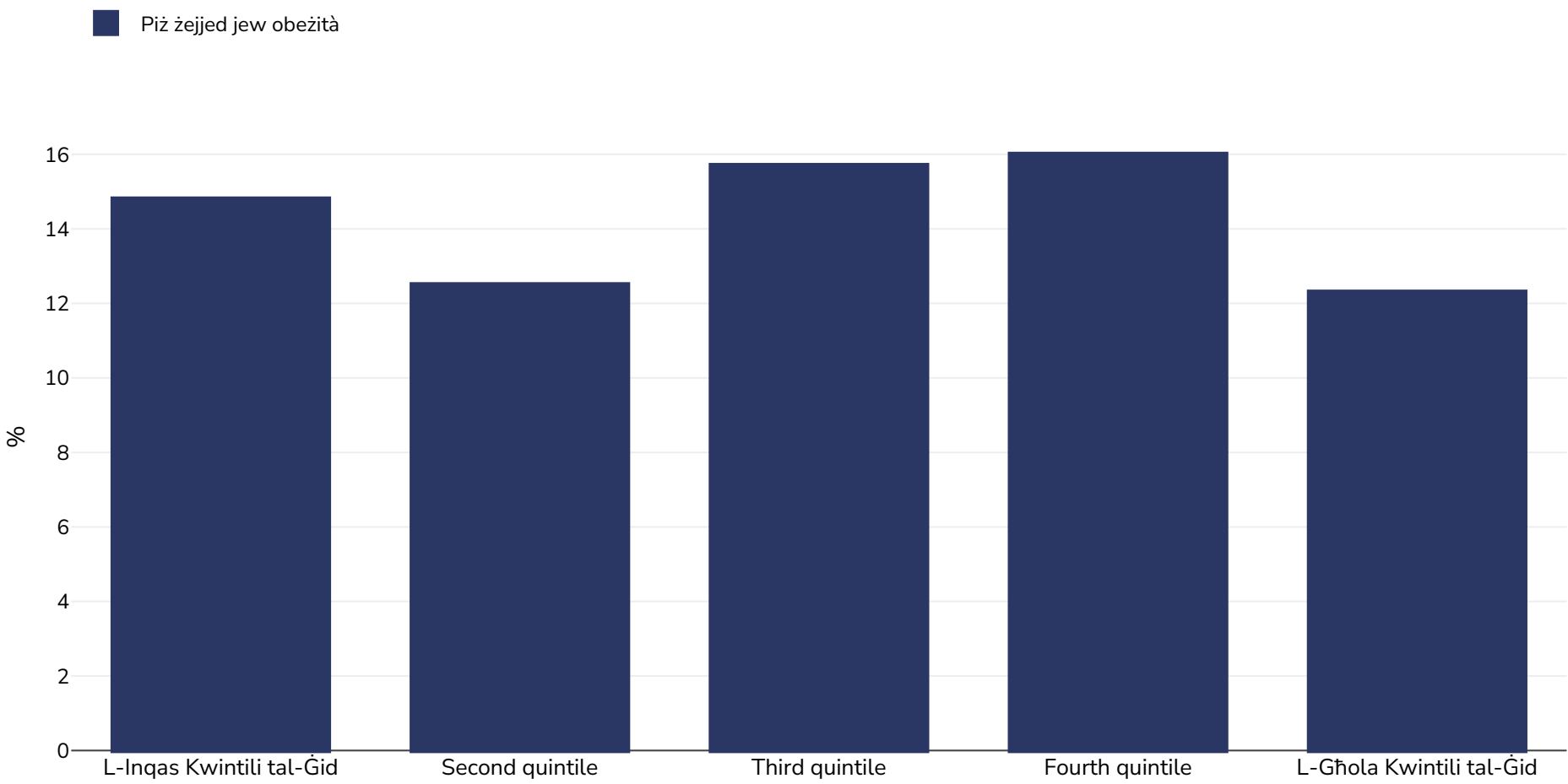


It-Tuneżija: Overweight/obesity by socio-economic group

Infants, 2011-2012



Id-daqs tal-kampjun: 2529

Referenzi: MICS: Suivi de la situation des enfants et des femmes en Tunisie- Enquête par grappes à indicateurs multiples 2011-2012: Rapport Final. MICS. Tunis, Tunisie: MDCI, INS, UNICEF, 2013.

Noti: UNICEF/WHO/World Bank Joint Child Malnutrition Estimates Expanded Database: Overweight (Survey Estimates), May 2023, New York. For more information about the methodology, please consult <https://data.unicef.org/resources/jme-2023-country-consultations/> Percentage of children under 5 years of age falling above 2 standard deviations (moderate and severe) from the median weight-for-height of the reference population.

Definizzjonijiet (disponibbli bl-Ingliż biss): =>+2SD