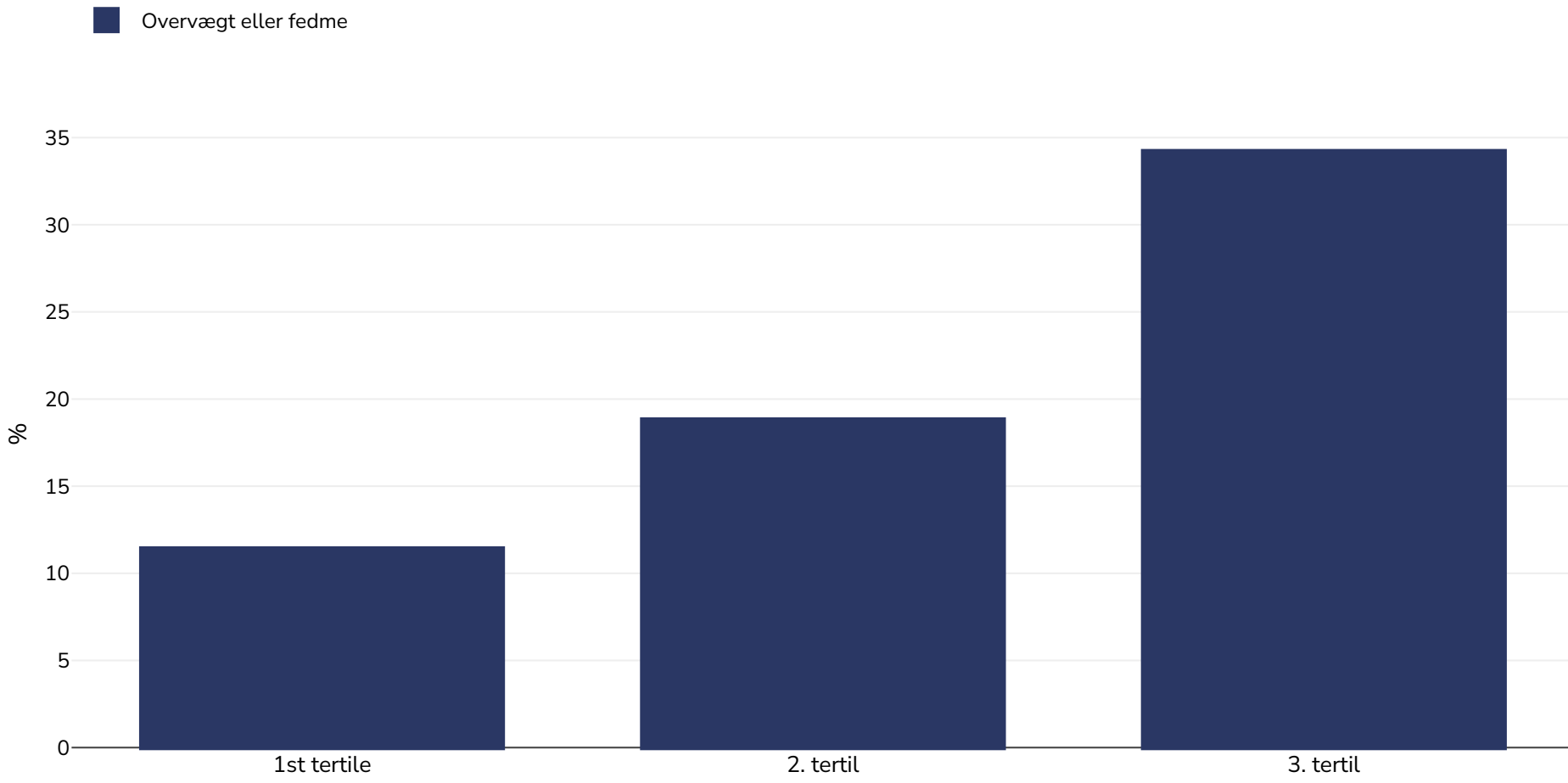


Indien: Overweight/obesity by socio-economic group

Voksne, 2008-2010



Undersøgelsestype:	Målt
Alder:	20+
Prøvens størrelse:	12634
Area covered:	National
Referencer:	Pradeepa R, Anjana RM, Joshi SR, et al. Prevalence of generalized & abdominal obesity in urban & rural India- the ICMR - INDIAB Study (Phase-I) [ICMR - INDIAB-3]. The Indian Journal of Medical Research. 2015;142(2):139-150. doi:10.4103/0971-5916.164234.
Noter (kun tilgængelige på engelsk):	Prevalence of overweight and obesity by income. Generalized obesity (GO) was defined as a BMI ≥ 25 kg/m ² for both genders (based on the World Health Organization Asia Pacific Guidelines).

Medmindre andet er angivet, henviser overvægt til en BMI på mellem 25 kg og 29,9 kg/m², fedme henviser til en BMI på mere end 30 kg/m².