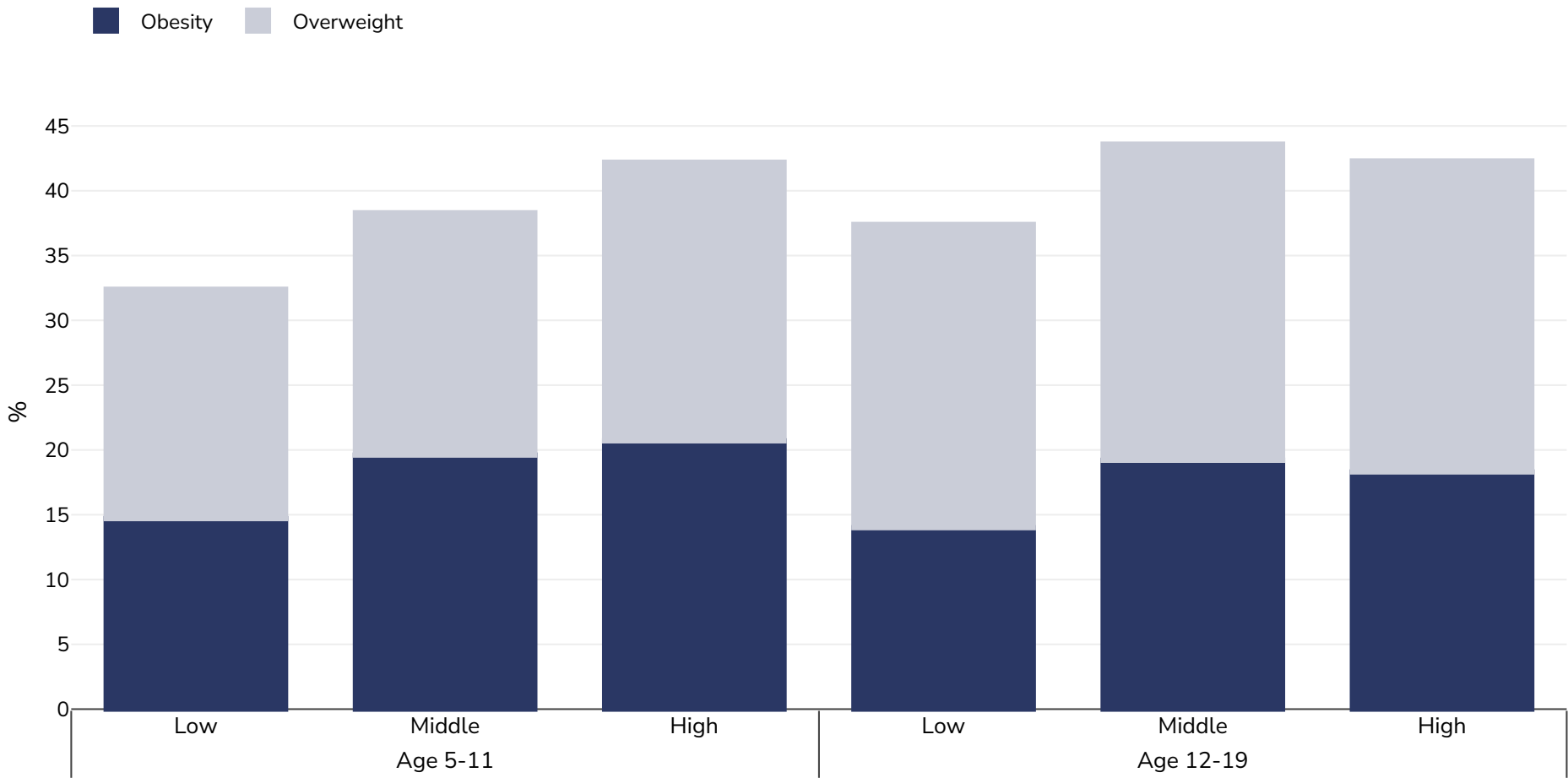


# Mexico: Overweight/obesity by socio-economic group

Children, 2020-2022



Survey type:	Measured
Sample size:	12371
Area covered:	National
References:	Shamah-Levy T, Gaona-Pineda EB, Cuevas-Nasu L, Morales-Ruan C, Valenzuela-Bravo DG, Méndez-Gómez Humaran I, Ávila-Arcos MA. Prevalence of overweight and obesity in the school-age and adolescent population in Mexico. Ensanut Continua 2020-2022. Salud Publica Mex [Internet]. June 14, 2023;65:s218-s224. Available from: <a href="https://saludpublica.mx/index.php/spm/article/view/14762">https://saludpublica.mx/index.php/spm/article/view/14762</a> (Accessed 15.05.25)
Definitions:	Socioeconomic status refers to welfare condition which is based on housing characteristics and goods and services available in the home, as in previous Ensanut surveys. Low = tertile 1, middle = tertile 2, high = tertile 3.
Cutoffs:	WHO 2007