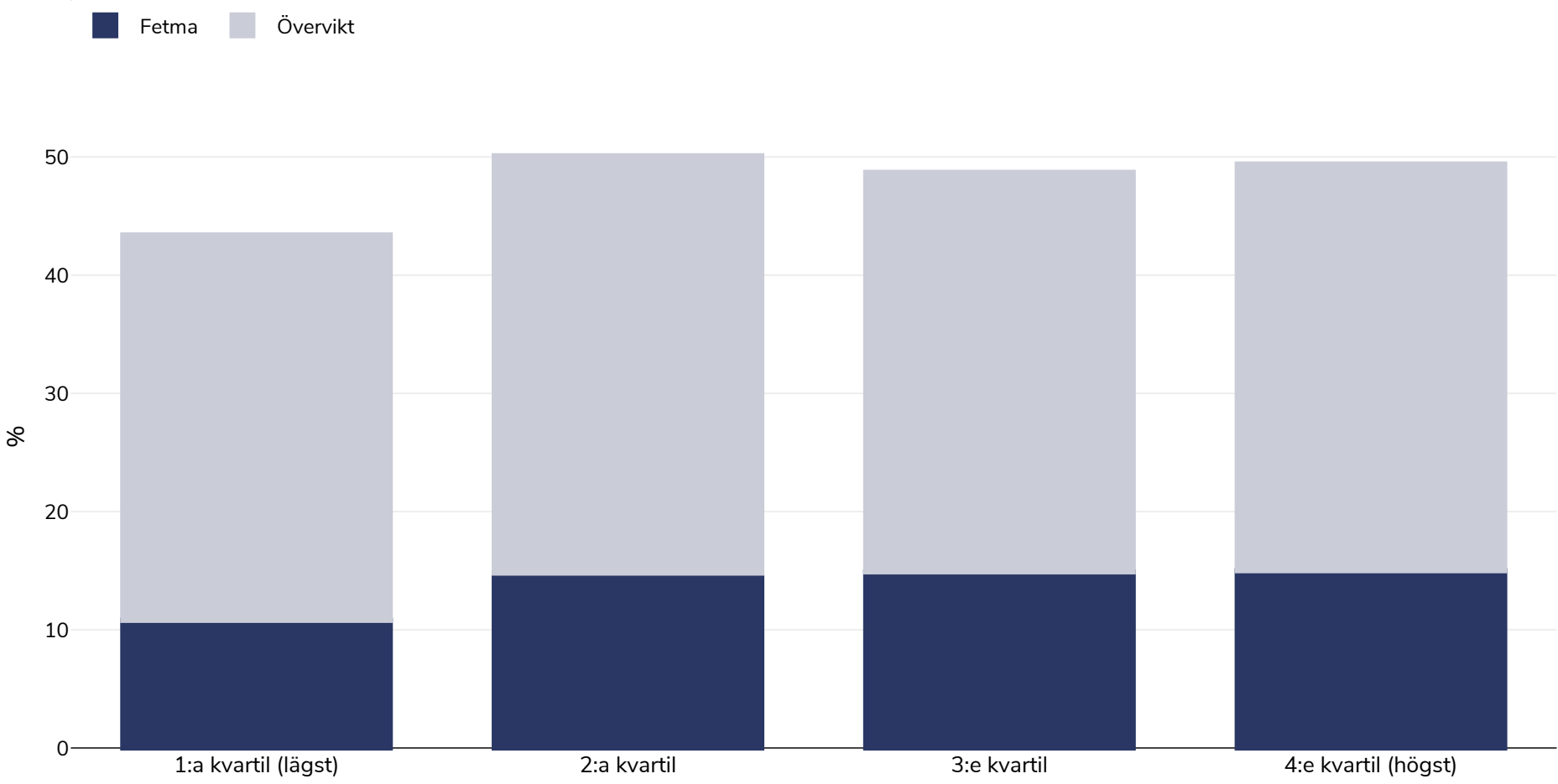


Peru: Overweight/obesity by socio-economic group

Kvinnor, 2008



Undersökningstyp:	Uppmätt
Ålder:	15-49
Urvalsstorlek:	22151
Område som omfattas:	Nationell
Referenser:	Poterico JA, Stanojevic S, Ruiz P, Bernabe-Ortiz A, Miranda JJ. The Association between Socioeconomic Status and Obesity in Peruvian Women. <i>Obesity</i> (Silver Spring, Md). 2012;20(11):2283-2289. doi:10.1038/oby.2011.288.
Anteckningar:	The possession assets index variable was constructed by the INEI using factor analysis. This variable was subsequently categorized into quartiles separately for rural and urban areas, and then combined into a single variable.

Om inte annat anges avser övervikt ett BMI mellan 25 kg och 29,9 kg/m², fetma avser ett BMI högre än 30 kg/m².