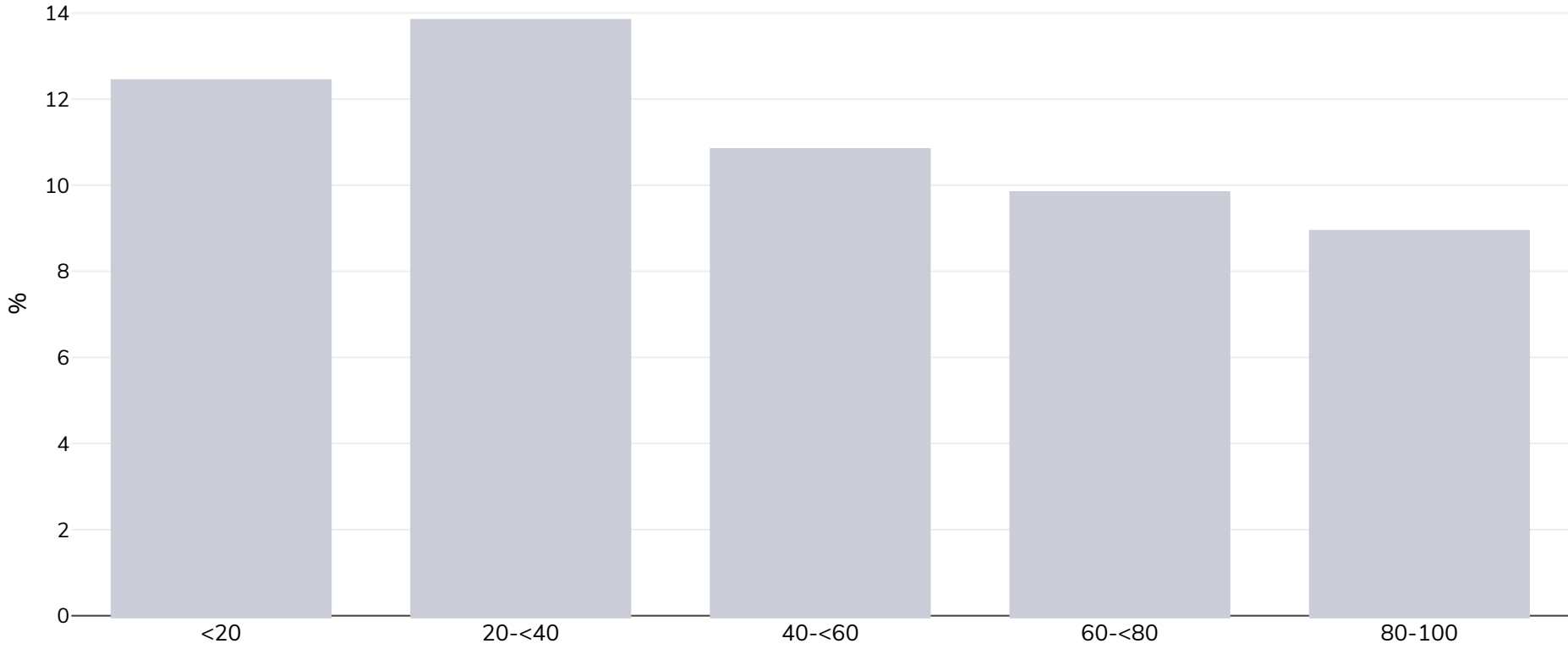


Denmark: Overweight/obesity by socio-economic group

Girls, 2003-2010

Overweight



Survey type: Self-reported

Age: 7

Sample size: 44,204

Area covered: National

References: Morgen CS, Andersen PK, Mortensen LH, et al. Socioeconomic disparities in birth weight and body mass index during infancy through age 7 years: a study within the Danish National Birth Cohort. *BMJ Open*. 2017;7(1):e011781. doi:10.1136/bmjopen-2016-011781.

Notes: Prevalence of overweight by household income (%) IOTF BMI cut-offs used

Cutoffs: IOTF