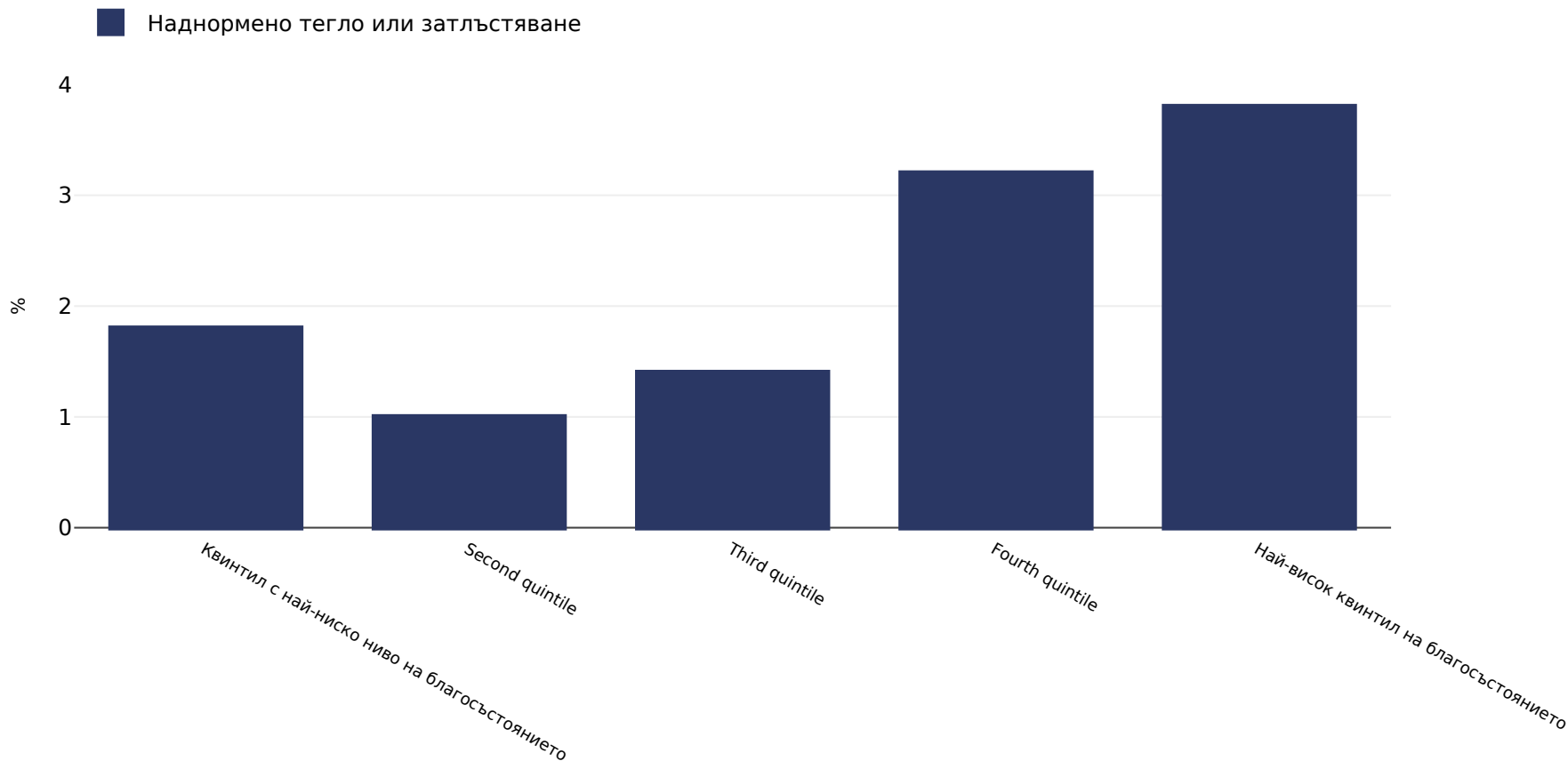


# Бангладеш: Overweight/obesity by socio-economic group

Infants, 2017-2018



Количество на пробите:

8113

Референции:

DHS: Bangladesh Demographic and Health Survey 2017-18. Dhaka, Bangladesh, and Rockville, Maryland, USA: NIPORT and ICF

Забележки:

UNICEF/WHO/World Bank Joint Child Malnutrition Estimates Expanded Database: Overweight (Survey Estimates), May 2023, New York. For more information about the methodology, please consult <https://data.unicef.org/resources/jme-2023-country-consultations/>

Определения:

=>+SD