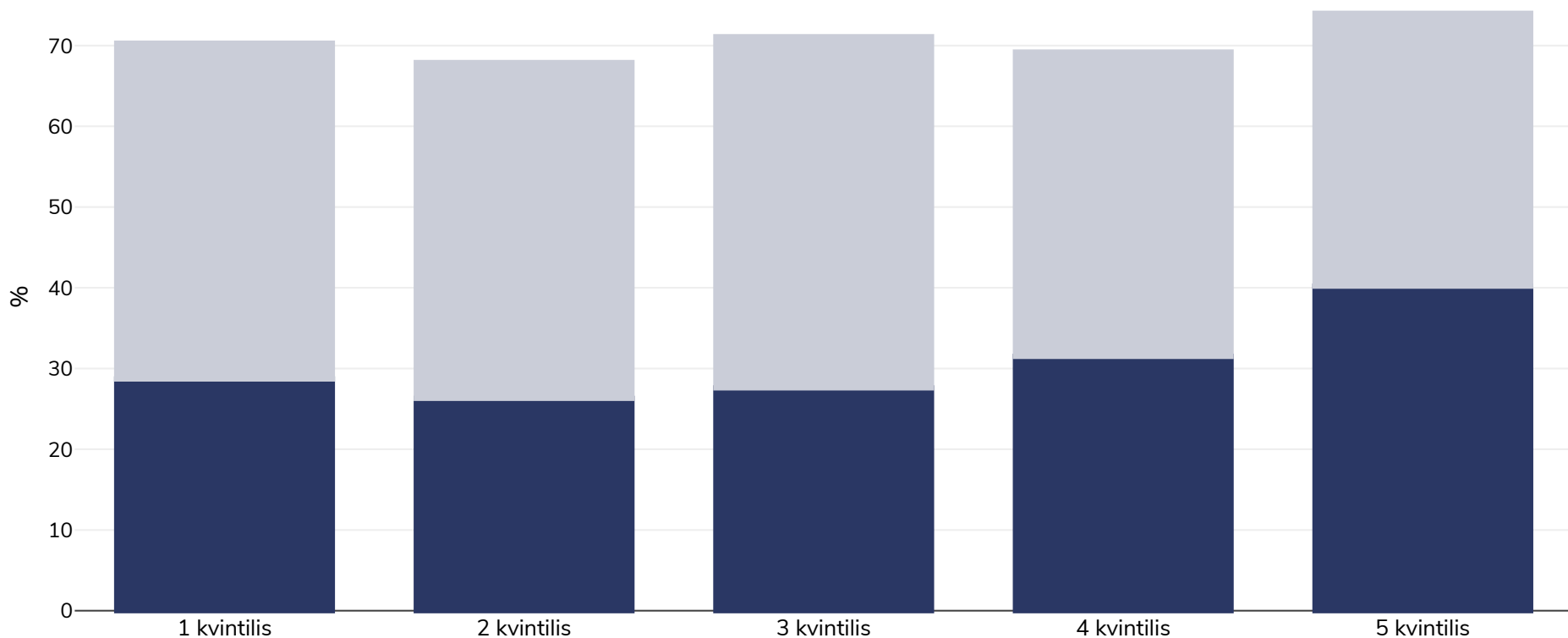


# Naujoji Zelandija: Overweight/obesity by socio-economic group

Vyrai, 2017-2018

■ Nutukimas ■ Antsvoris



<b>Tyrimo tipas:</b>	Išmatuotas
<b>Amžius:</b>	15+
<b>Imties dydis:</b>	12,823
<b>Teritorija:</b>	Nacionalinis
<b>Nuorodos:</b>	Ministry of Health. 2018. Annual Data Explorer 2017/18: New Zealand Health Survey [Data File]. URL: <a href="https://minhealthnz.shinyapps.io/nz-health-survey-2017-18-annual-data-explorer/">https://minhealthnz.shinyapps.io/nz-health-survey-2017-18-annual-data-explorer/</a> (Accessed 15.04.19)

Jei nenurodyta kitaip, antsvoris reiškia KMI nuo 25 kg iki 29,9 kg/m<sup>2</sup>, nutukimas – didesnj nei 30 kg/m<sup>2</sup> KMI..