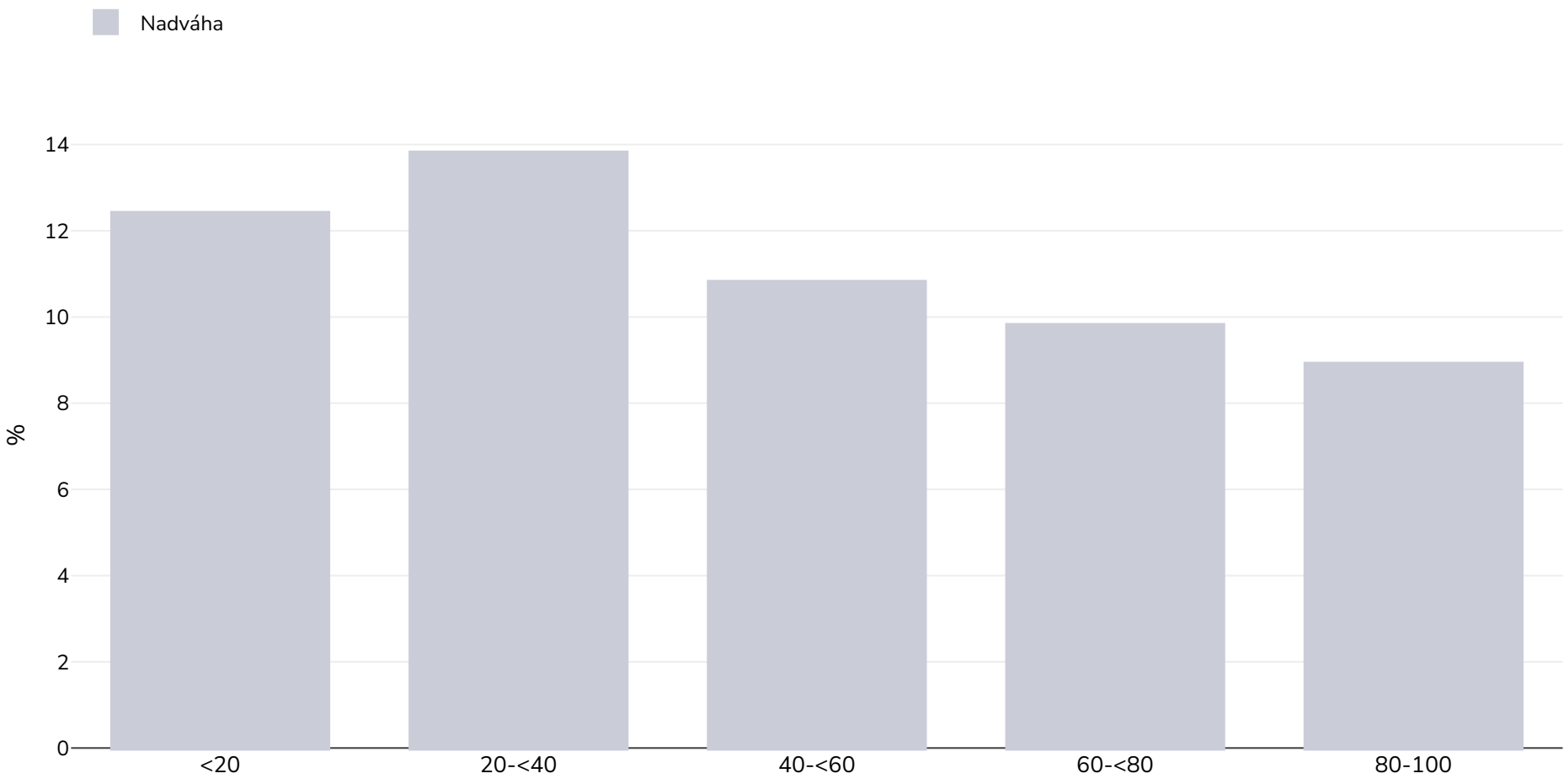


Dánsko: Overweight/obesity by socio-economic group

Dívky, 2003-2010



Typ průzkumu:	Samonahlášený
Věk:	7
Velikost vzorku:	44,204
Pokrytá oblast:	Národní
Reference:	Morgen CS, Andersen PK, Mortensen LH, et al. Socioeconomic disparities in birth weight and body mass index during infancy through age 7 years: a study within the Danish National Birth Cohort. <i>BMJ Open</i> . 2017;7(1):e011781. doi:10.1136/bmjopen-2016-011781.
Poznámky:	Prevalence of overweight by household income (%) IOTF BMI cut-offs used
Cutoffs:	IOTF