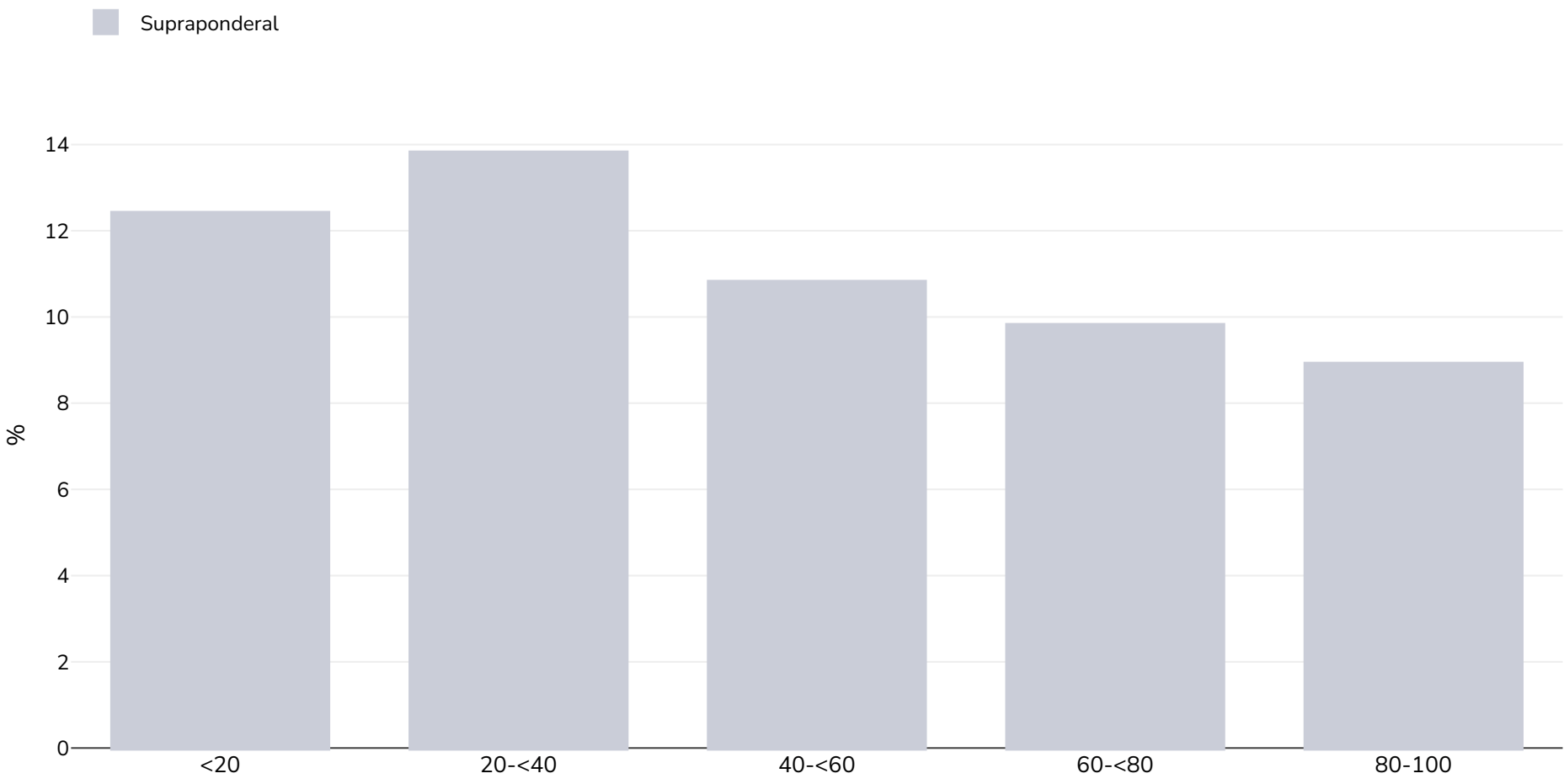


Danemarca: Overweight/obesity by socio-economic group

Fete, 2003-2010



Tip de studiu:	Auto-raportat
Vârsta:	7
Dimensiunea eșantionului:	44,204
Zona acoperită:	Național
Bibliografie:	Morgen CS, Andersen PK, Mortensen LH, et al. Socioeconomic disparities in birth weight and body mass index during infancy through age 7 years: a study within the Danish National Birth Cohort. <i>BMJ Open</i> . 2017;7(1):e011781. doi:10.1136/bmjopen-2016-011781.
Note (disponibile numai în limba engleză):	Prevalence of overweight by household income (%) IOTF BMI cut-offs used
Cutoffs:	IOTF