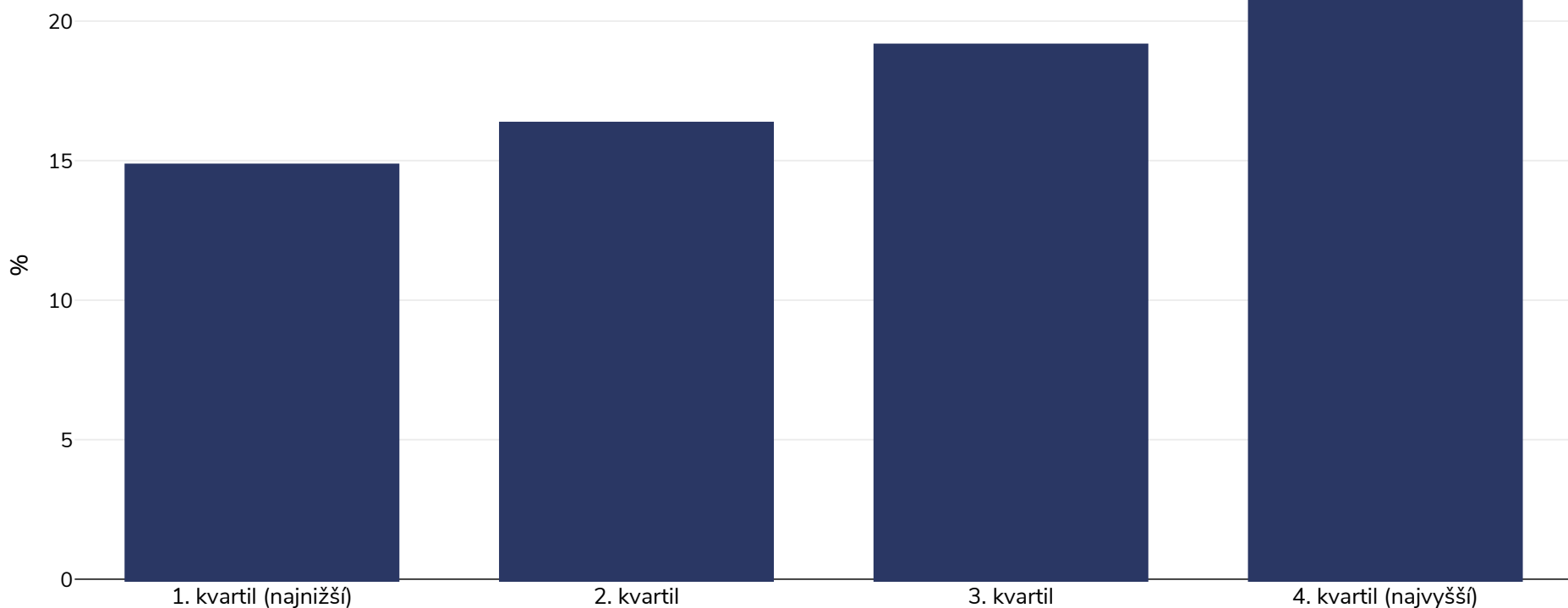


# Čína: Overweight/obesity by socio-economic group

Deti, 2014

■ Nadváha alebo obezita



Typ prieskumu: Nameraná hodnota

Vek: 5-12

Velkosť vzorky: 9917

Dotknutá oblasť: Regional - Guangzhou (urban setting)

Odkazy: Liu W, Liu W, Lin R, et al. Socioeconomic determinants of childhood obesity among primary school children in Guangzhou, China. BMC Public Health. 2016;16:482. doi:10.1186/s12889-016-3171-1.

**Poznámky (k dispozícii iba v angličtine):** BMI standard deviation scores (BMI z-score) were derived using the age (calculated by subtracting the date of birth from the date of examination) and sex specific WHO growth reference for school-aged children, which were further classified as non-overweight ( $\leq 1SD$ ), overweight ( $> 1SD$ ) and obese ( $> 2SD$ ). Overweight and obesity prevalence by Father's education. Education was categorised into low (primary and junior high school level), medium (senior high and vocational school level) or high (university level or higher).

Cutoffs: WHO