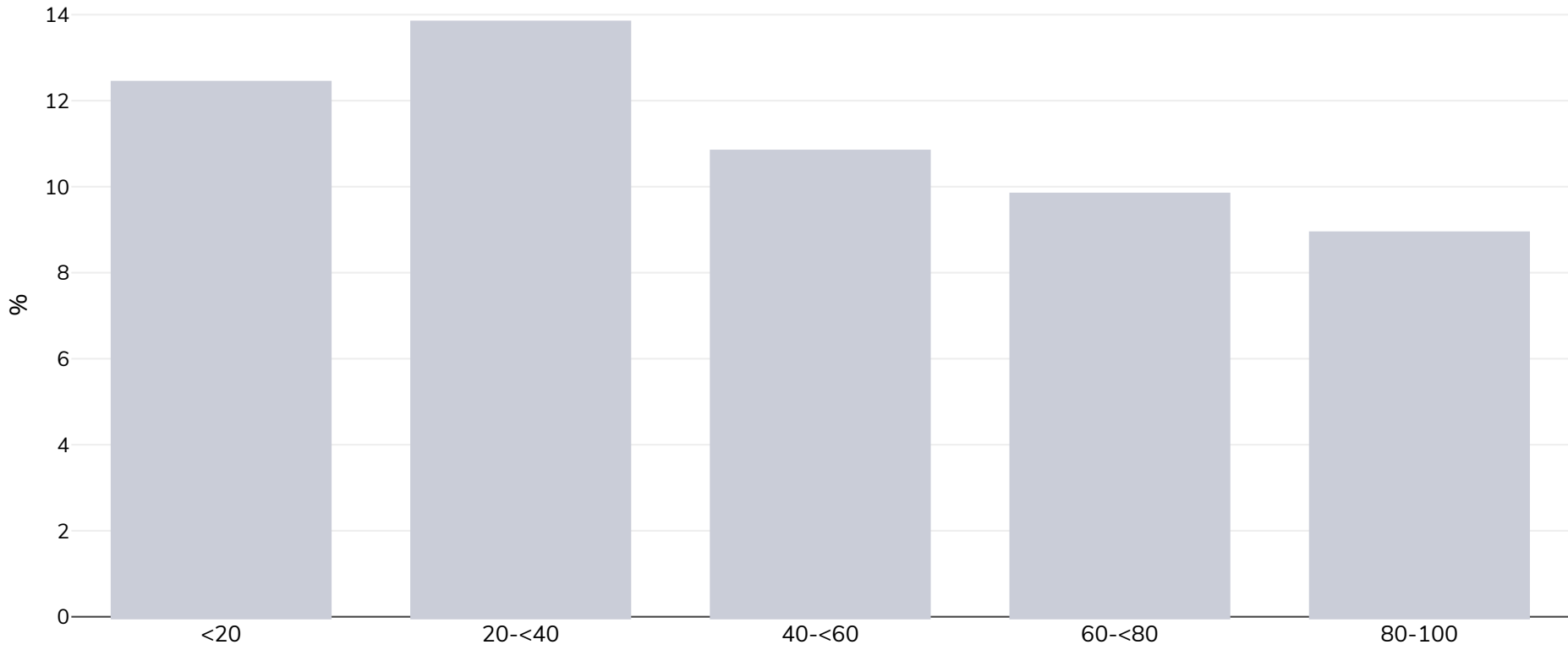


# Denmark: Overweight/obesity by socio-economic group

## Girls, 2003-2010

Overweight



<b>Survey type:</b>	Self-reported
<b>Age:</b>	7
<b>Sample size:</b>	44,204
<b>Area covered:</b>	National
<b>References:</b>	Morgen CS, Andersen PK, Mortensen LH, et al. Socioeconomic disparities in birth weight and body mass index during infancy through age 7 years: a study within the Danish National Birth Cohort. <i>BMJ Open</i> . 2017;7(1):e011781. doi:10.1136/bmjopen-2016-011781.
<b>Notes:</b>	Prevalence of overweight by household income (%) IOTF BMI cut-offs used
<b>Cutoffs:</b>	IOTF