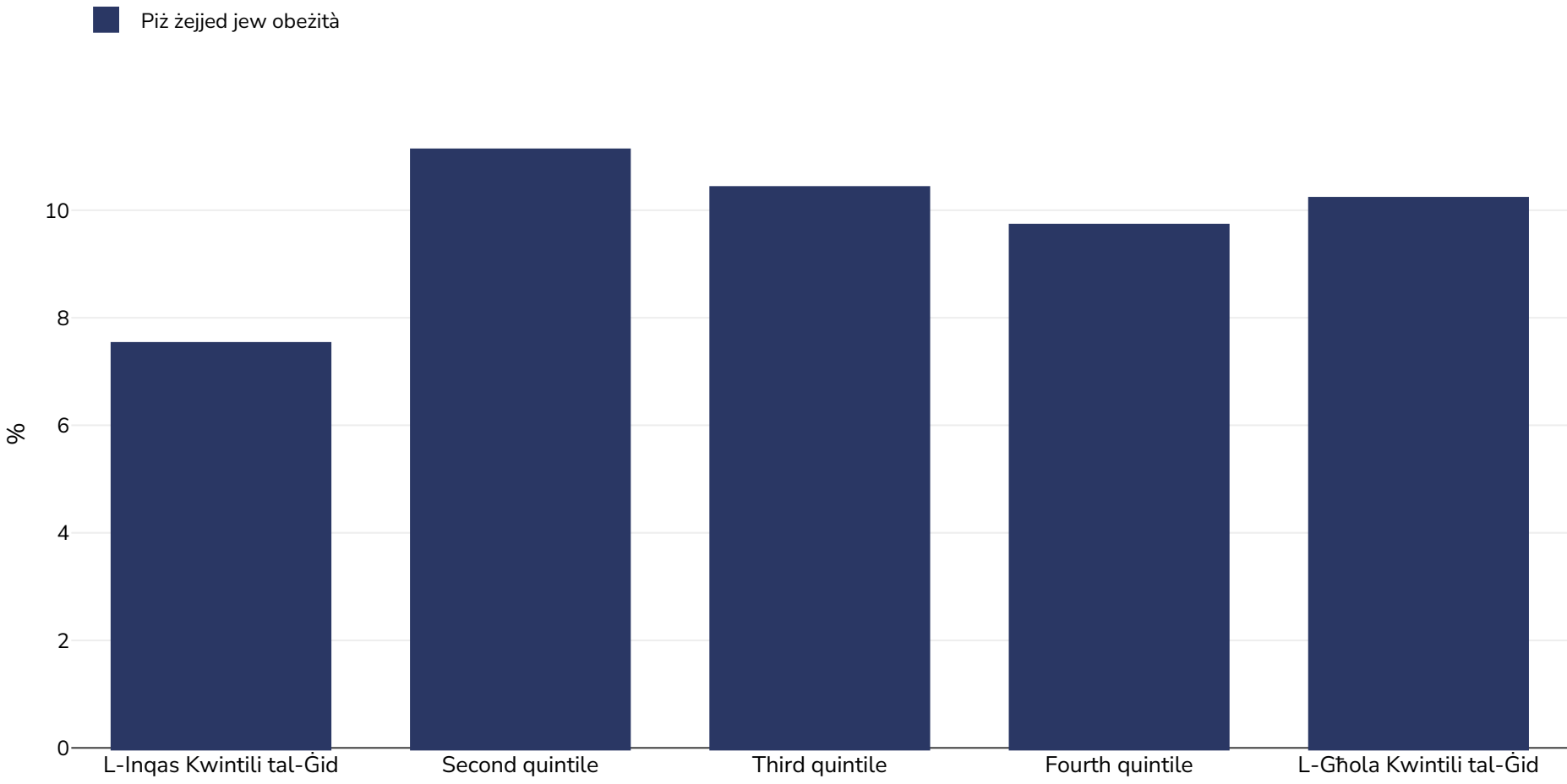


# Il-Malawi: Overweight/obesity by socio-economic group

Infants, 1992



**Id-daqs tal-kampjun:** 3290

**Referenzi:** DHS: Malawi demographic and health survey 1992. Demographic and Health Surveys. National Statistics Office. Zomba, Malawi, 1993

**Noti:** UNICEF/WHO/World Bank Joint Child Malnutrition Estimates Expanded Database: Overweight (Survey Estimates), May 2023, New York. For more information about the methodology, please consult <https://data.unicef.org/resources/jme-2023-country-consultations/> Percentage of children under 5 years of age falling above 2 standard deviations (moderate and severe) from the median weight-for-height of the reference population.

**Definizzjonijiet (disponibbli bl-Ingliż biss):** =>+2SD