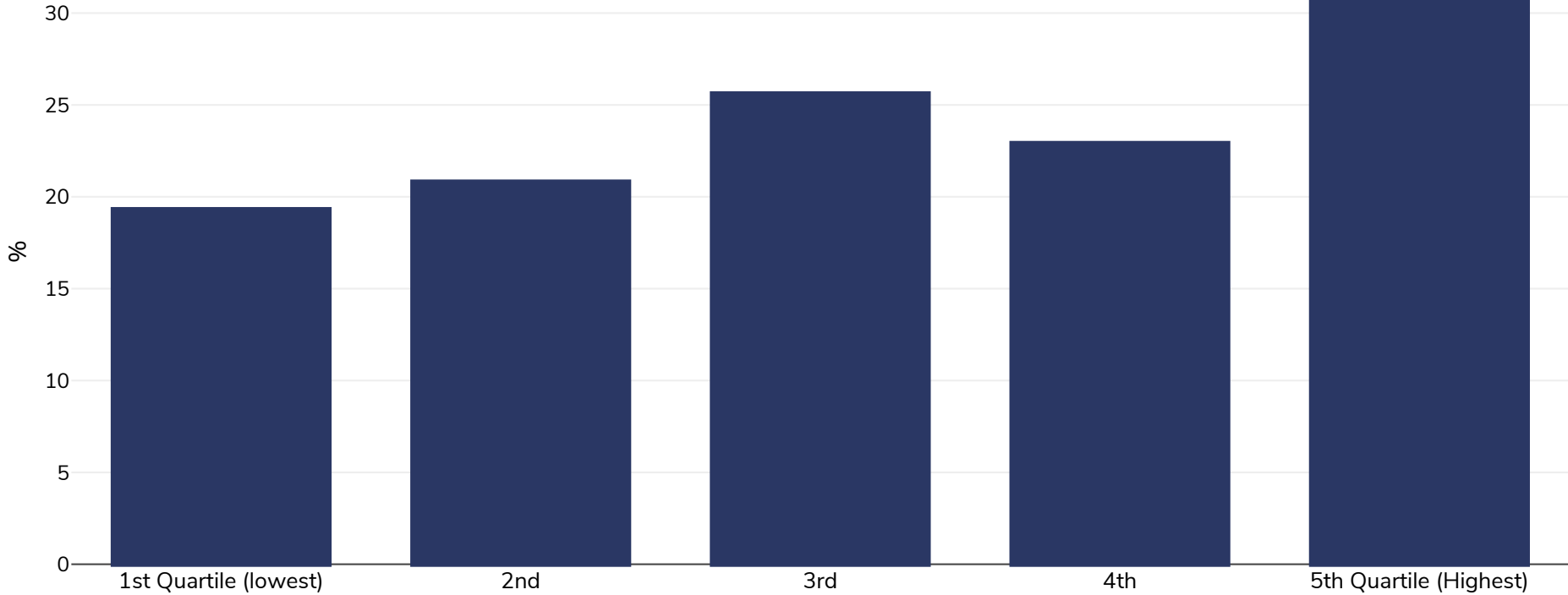


# Bahamas: Overweight/obesity by socio-economic group

Men, 2001

■ Obesity



**Survey type:** Measured

**Age:** 21-60

**Sample size:** 1254

**Area covered:** National

**References:** N Brathwaite, A Brathwaite, M Taylor. The Socio-economic Determinants of Obesity in Adults in the Bahamas. West Indian Med J 2011; 60 (4): 434

Unless otherwise noted, overweight refers to a BMI between 25kg and 29.9kg/m<sup>2</sup>, obesity refers to a BMI greater than 30kg/m<sup>2</sup>.