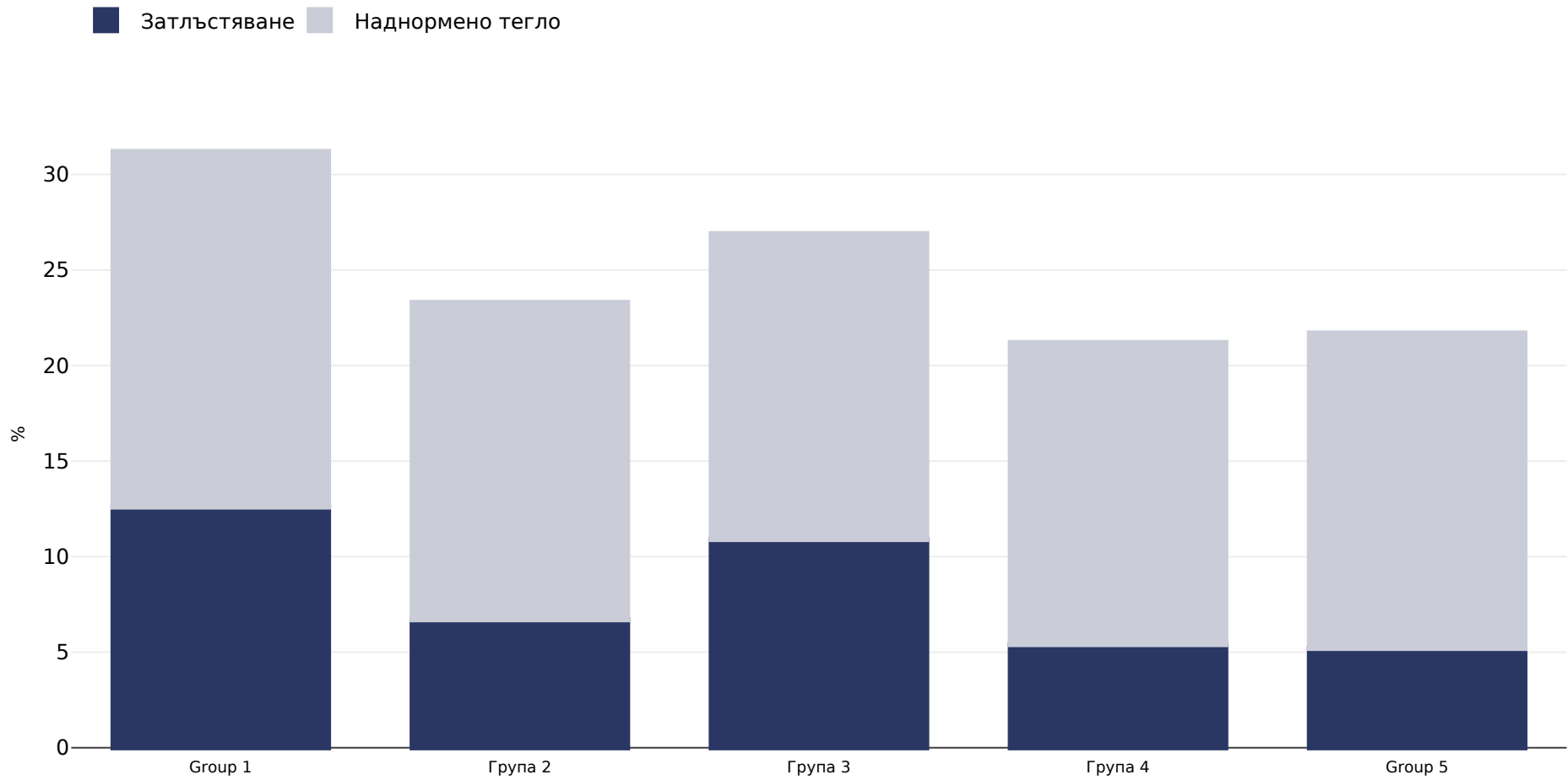


# Австралия: Overweight/obesity by socio-economic group

Момичета, 2017-2018



|                        |  |
|------------------------|--|
| Тип анкета:            | Измерено   |
| Възраст:               | 2-17   |
| Количество на пробите: | 3769   |
| Обхваната зона:        | Национално   |
| Референции:            | Australian National Health Survey 2017-18 Available at: <a href="https://www.abs.gov.au/statistics/health/health-conditions-and-risks/national-health-survey-first-results/latest-release#chronic-conditions">https://www.abs.gov.au/statistics/health/health-conditions-and-risks/national-health-survey-first-results/latest-release#chronic-conditions</a> (accessed 27.10.2022)  |
| Забележки:             | Socioeconomic areas are quintiles of Socio-Economic Indexes for Areas 2016 (SEIFA 2016), specifically the Index of Relative Socio-Economic Disadvantage (IRSD) (ABS 2018c). Lower socioeconomic areas have greater overall levels of disadvantage. "This index ranks areas on a continuum from most disadvantaged to least disadvantaged. A low score on this index indicates a high proportion of relatively disadvantaged people in an area. We cannot conclude that an area with a very high score has a large proportion of relatively advantaged people, as there are no variables in the index to indicate this. We can only conclude that such an area has a relatively low incidence of disadvantage." |
| Определения:           | Group 1: Most disadvantaged areas Group 5: Least disadvantaged areas   |
| Cutoffs:               | IOTF   |