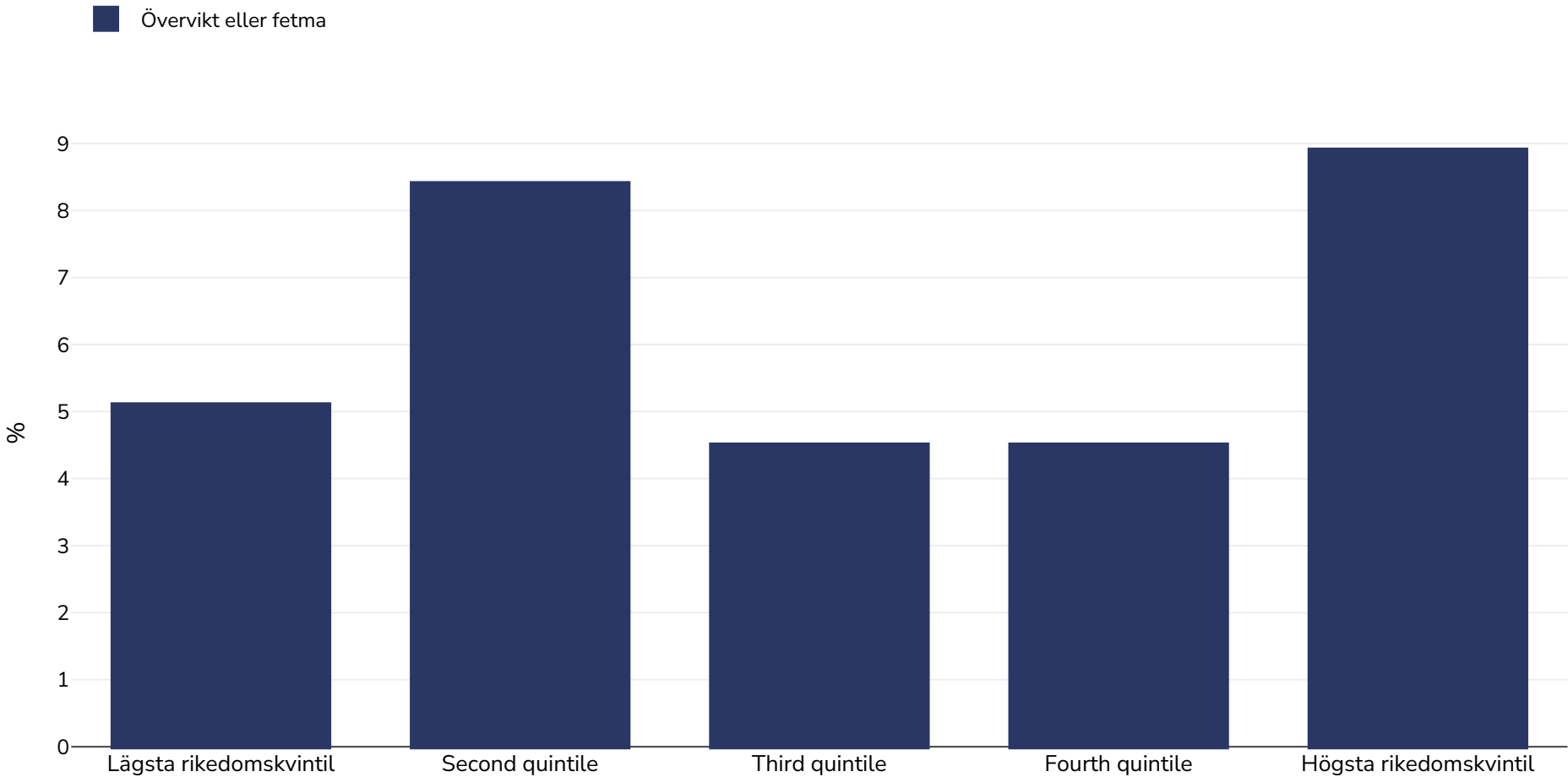


Saint Lucia: Overweight/obesity by socio-economic group

Infants, 2012



Urvalsstorlek: 278

Referenser: MICS: Saint Lucia multiple indicator cluster survey 2012: Final report. MICS. Castries, Saint Lucia, 2014.

Anteckningar: UNICEF/WHO/World Bank Joint Child Malnutrition Estimates Expanded Database: Overweight (Survey Estimates), May 2023, New York. For more information about the methodology, please consult <https://data.unicef.org/resources/jme-2023-country-consultations/>

Definitioner (endast tillgängliga på engelska): =>+SD