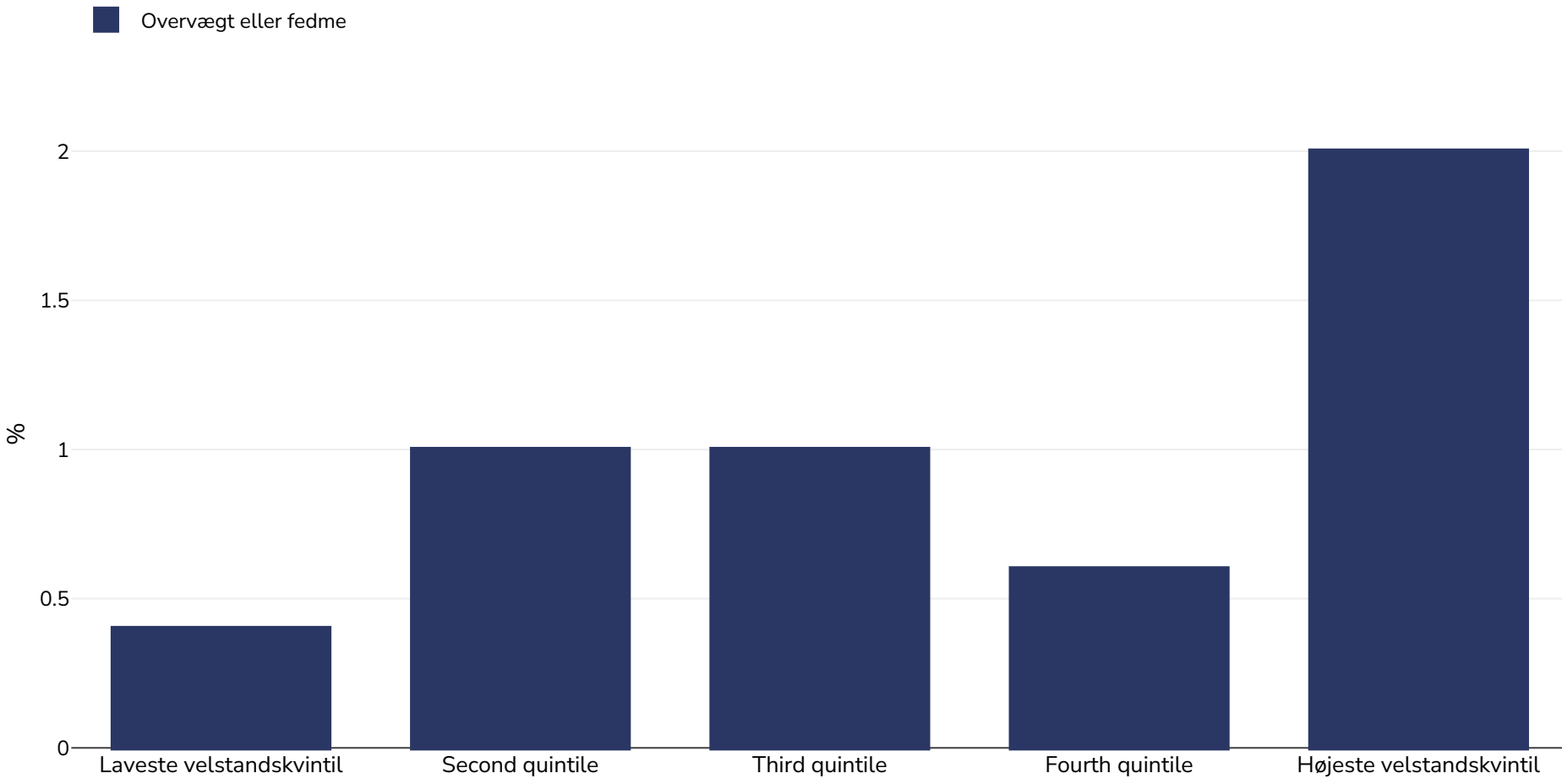


Senegal: Overweight/obesity by socio-economic group

Infants, 2016



Prøvens størrelse: 5814

Referencer: CDHS: Senegal : Enquête Démographique et de Santé Continue (EDS-Continue 2016). Rockville, Maryland, USA : ANSD et ICF

Noter (kun tilgængelige på engelsk): UNICEF/WHO/World Bank Joint Child Malnutrition Estimates Expanded Database: Overweight (Survey Estimates), May 2023, New York. For more information about the methodology, please consult <https://data.unicef.org/resources/jme-2023-country-consultations/> Percentage of children under 5 years of age falling above 2 standard deviations (moderate and severe) from the median weight-for-height of the reference population.

Definitioner (kun tilgængelig på engelsk): =>+2SD