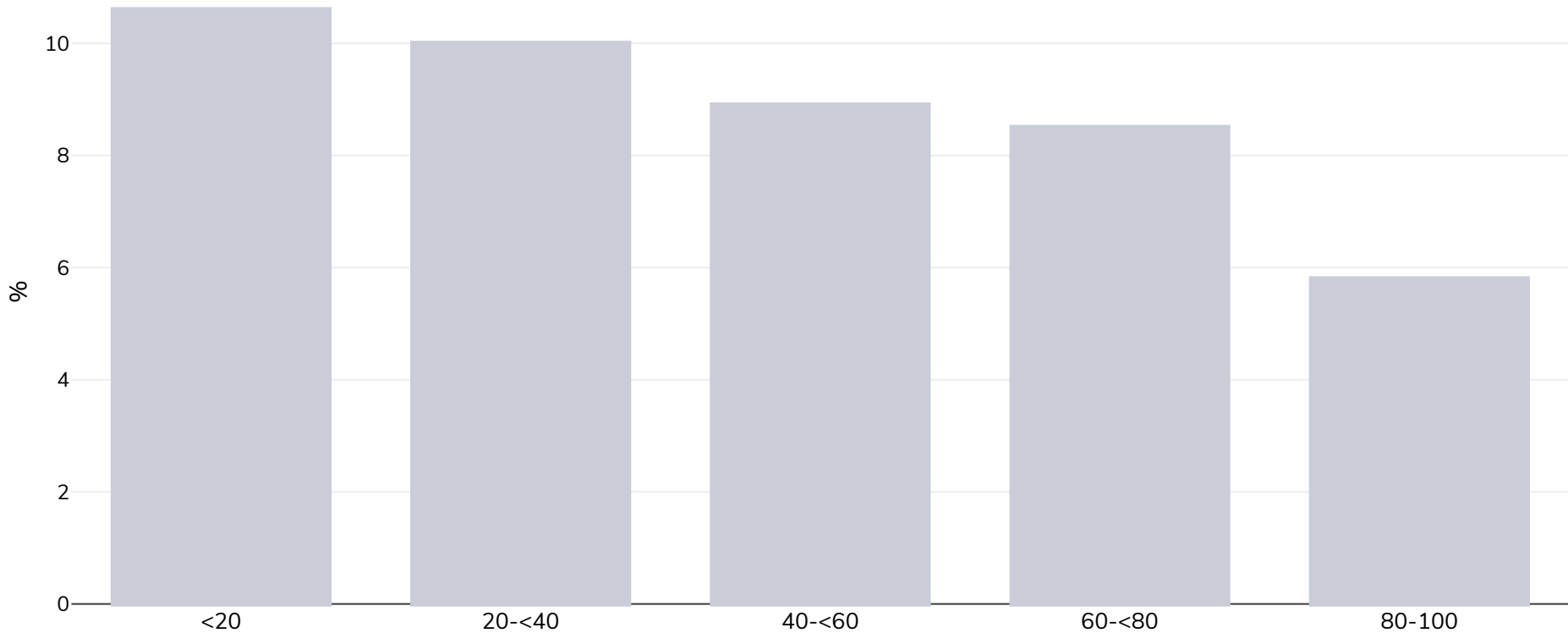


Denmark: Overweight/obesity by socio-economic group

Boys, 2003-2010

Overweight



Survey type:	Self-reported
Age:	7
Sample size:	44,204
Area covered:	National
References:	Morgen CS, Andersen PK, Mortensen LH, et al. Socioeconomic disparities in birth weight and body mass index during infancy through age 7 years: a study within the Danish National Birth Cohort. <i>BMJ Open</i> . 2017;7(1):e011781. doi:10.1136/bmjopen-2016-011781.
Notes:	Prevalence of overweight by household income (%) IOTF BMI cut-offs used
Cutoffs:	IOTF