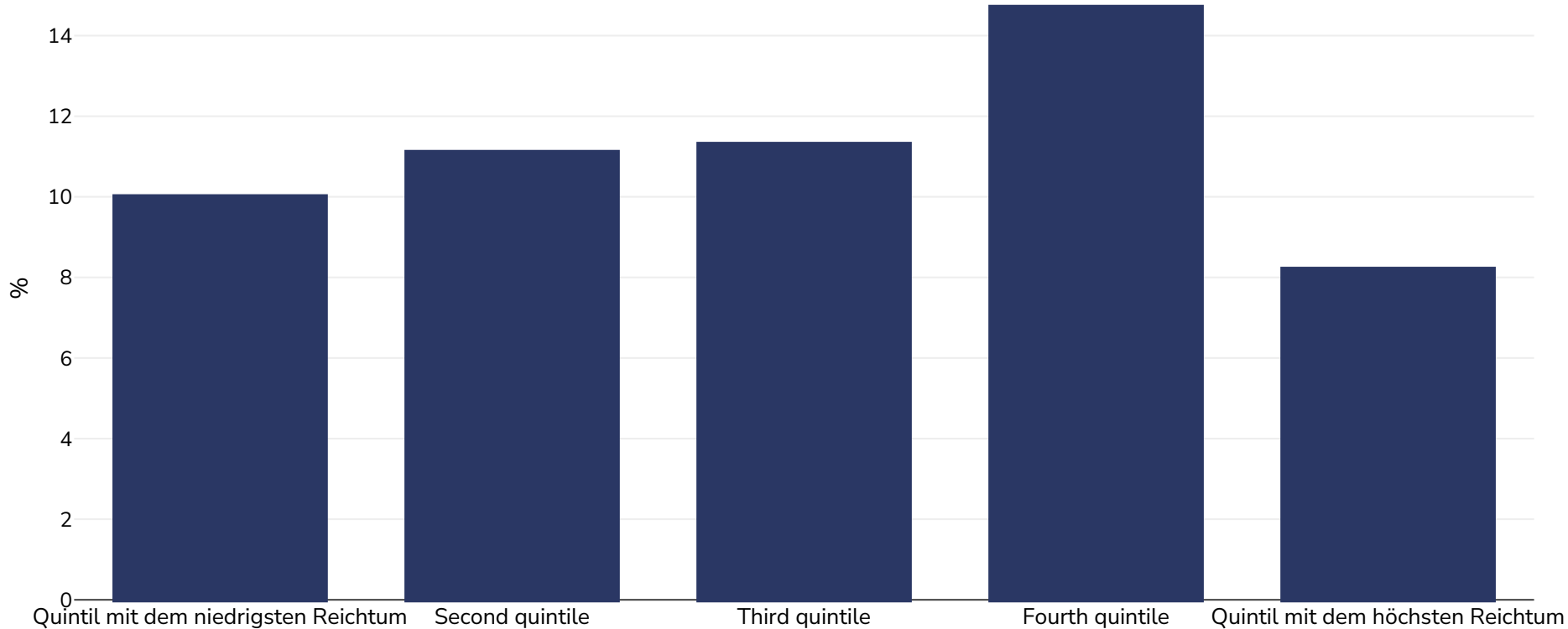


# Tonga: Overweight/obesity by socio-economic group

Infants, 2019

■ Übergewicht oder Adipositas



Stichprobengröße:

1271

Referenzen:

MICS: Tonga Multiple Indicator Cluster Survey 2019, Survey Findings Report. Nuku'alofa, Tonga: Tonga Statistics Department

Anmerkungen (nur in englischer Sprache verfügbar):

UNICEF/WHO/World Bank Joint Child Malnutrition Estimates Expanded Database: Overweight (Survey Estimates), May 2023, New York. For more information about the methodology, please consult <https://data.unicef.org/resources/jme-2023-country-consultations/>

Definitionen (nur in englischer Sprache verfügbar):

=>+SD