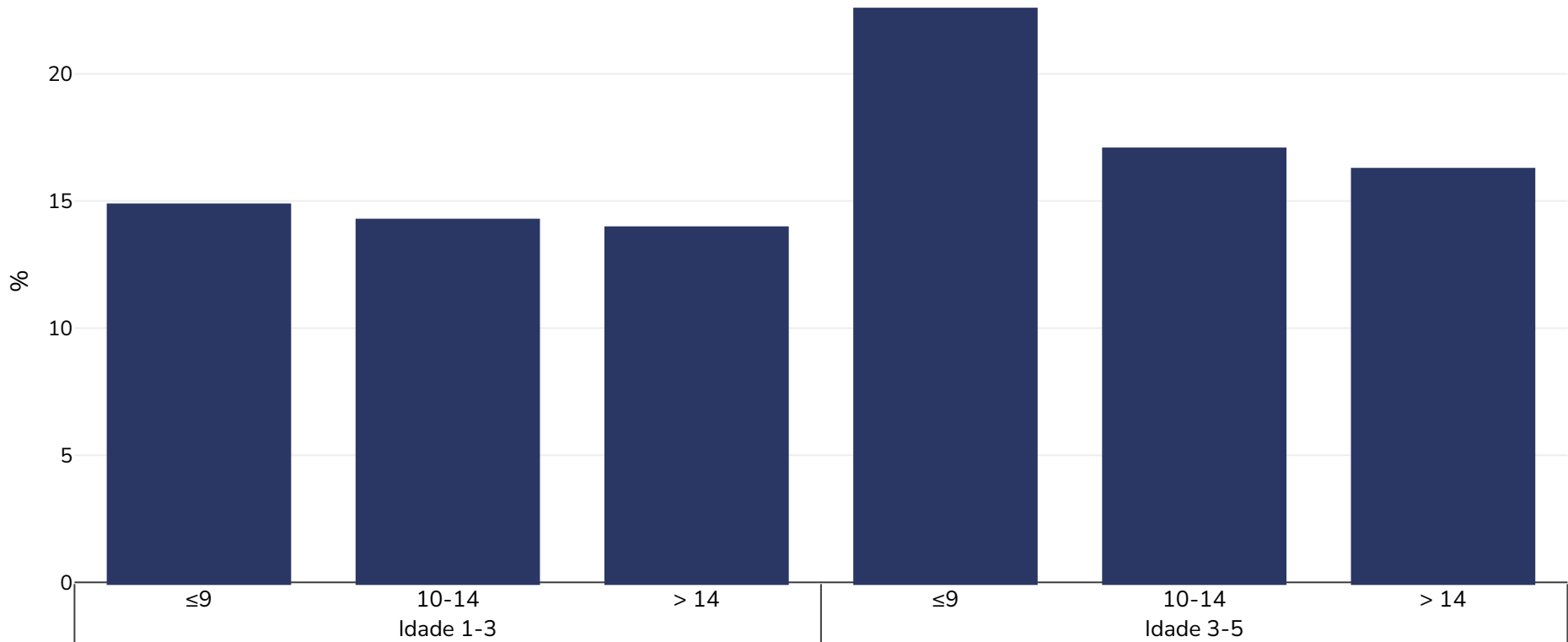


Grécia: Overweight/obesity by education

Infants, 2003-2004

■ Excesso de peso ou obesidade



Tipo de inquérito:	Medido
Tamanho da amostra:	2374
Área abrangida:	Nacional
Referências:	Manios et al. (2007) 'Prevalence of obesity in preschool Greek children, in relation to parental characteristics and region of residence', BMC Public Health, 7;178
Notas:	Prevalence of overweight by educational level of the mother (years) IOTF BMI cut-offs used
Cutoffs:	IOTF