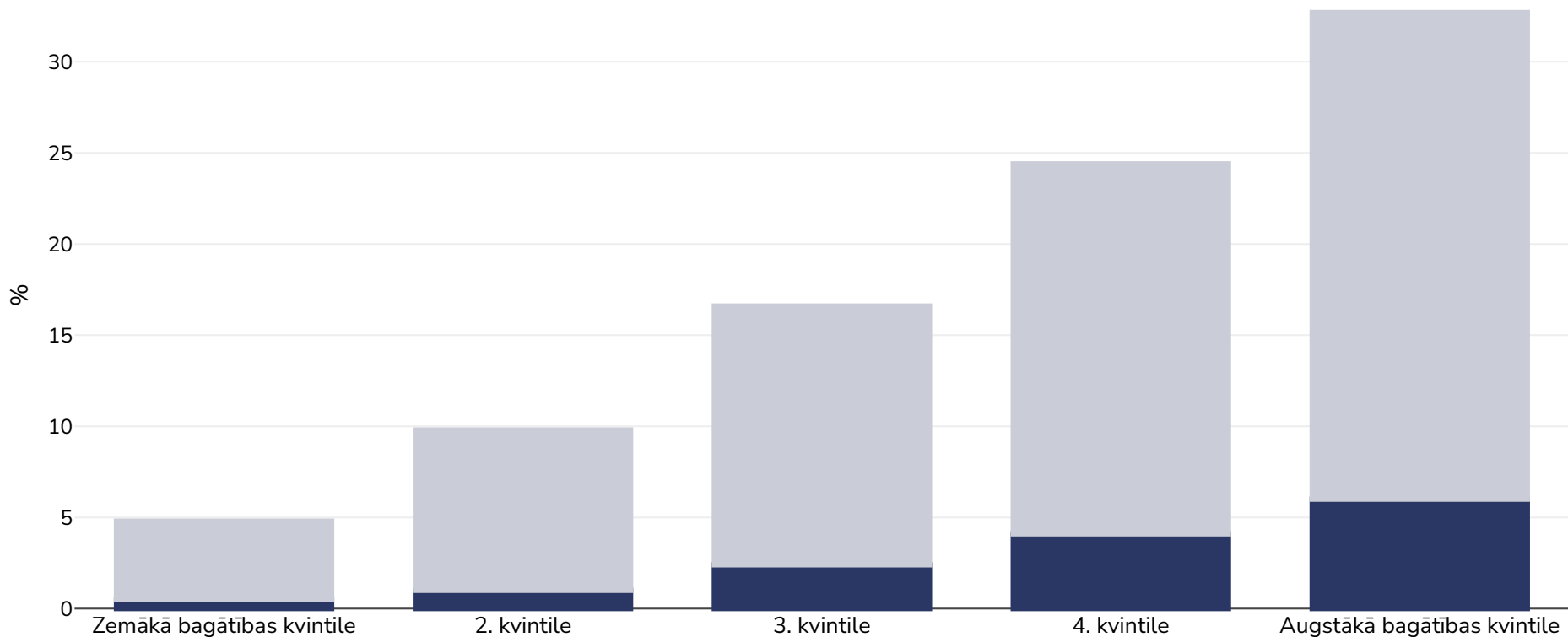


Indija: Overweight/obesity by socio-economic group

VÄ«rieÅji, 2015-2016

■ AptaukoÅanÅs ■ Liekais svars



Apsekojuma veids:

MÅrÅtÅvÅrtÅba

Vecums:

15-49

Izlases lielums:

754,697

AptvertÅ teritorija:

Valsts

Atsauces:

National Family Health Survey (NFHS-4). Available at: <https://dhsprogram.com/pubs/pdf/FR339/FR339.pdf> (Accessed 6 March 2019).

PiezÅmes (pieejamas tikai angÅÅu valodÅ):

WHO cut-offs used.

Ja nav norÅdÅts citÅdi, liekais svars attiecas uz ÅMI no 25Å kg lÅdz 29,9Å kg/mÅ², aptaukoÅjÅns attiecas uz ÅMI, kas lielÅks par 30Å kg/mÅ².