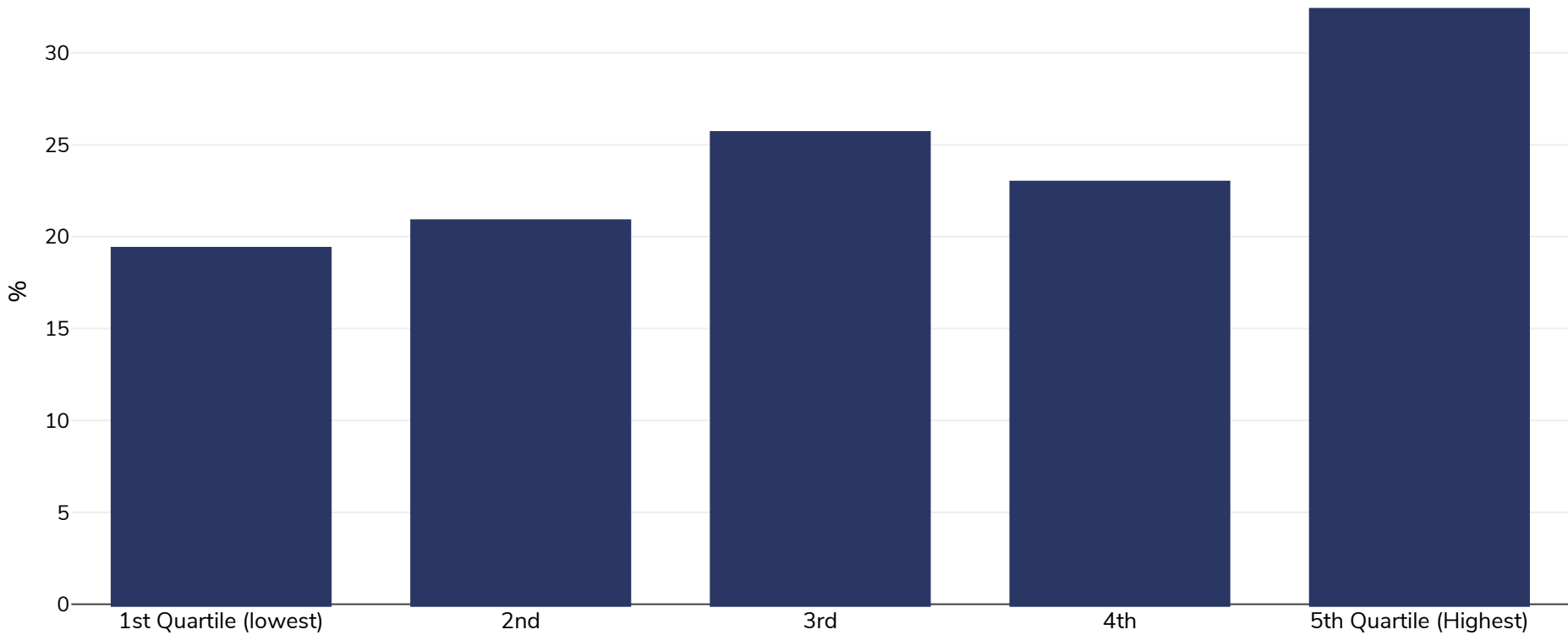


Bahamas: Overweight/obesity by socio-economic group

Men, 2001

■ Obesity



Survey type: Measured

Age: 21-60

Sample size: 1254

Area covered: National

References: N Brathwaite, A Brathwaite, M Taylor. The Socio-economic Determinants of Obesity in Adults in the Bahamas. West Indian Med J 2011; 60 (4): 434

Unless otherwise noted, overweight refers to a BMI between 25kg and 29.9kg/m², obesity refers to a BMI greater than 30kg/m².