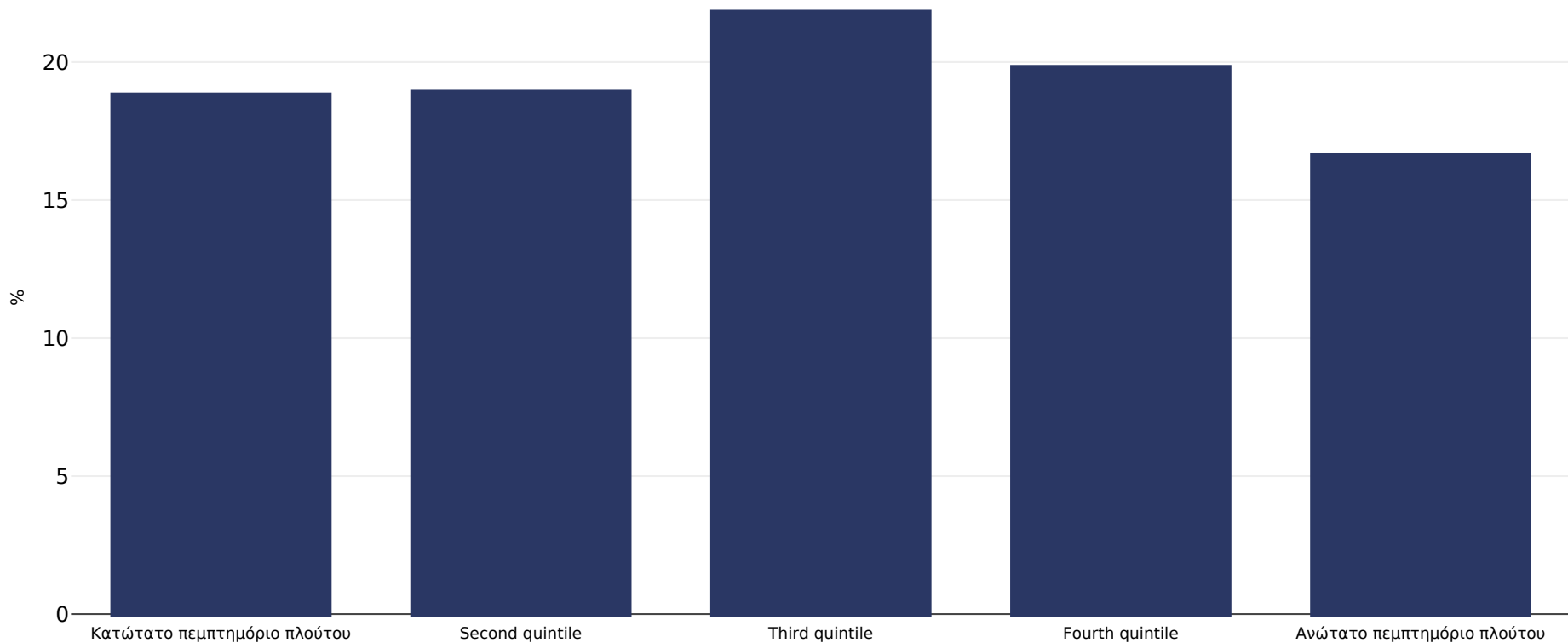


# Σερβία: Overweight/obesity by socio-economic group

Infants, 2005-2006

■ Υπερβολικό βάρος ή παχυσαρκία



**Μέγεθος δείγματος:**

3372

**Παραπομπές:**

MICS: Republic of Serbia multiple indicator cluster survey 2005, final report. Belgrade, Republic of Serbia: Statistical Office of the Republic of Serbia and Strategic Marketing Research Agency, 2006

**Σημειώσεις:**

UNICEF/WHO/World Bank Joint Child Malnutrition Estimates Expanded Database: Overweight (Survey Estimates), May 2023, New York. For more information about the methodology, please consult <https://data.unicef.org/resources/jme-2023-country-consultations/>. Percentage of children under 5 years of age falling above 2 standard deviations (moderate and severe) from the median weight-for-height of the reference population.

**Ορισμοί:**

=> +2SD