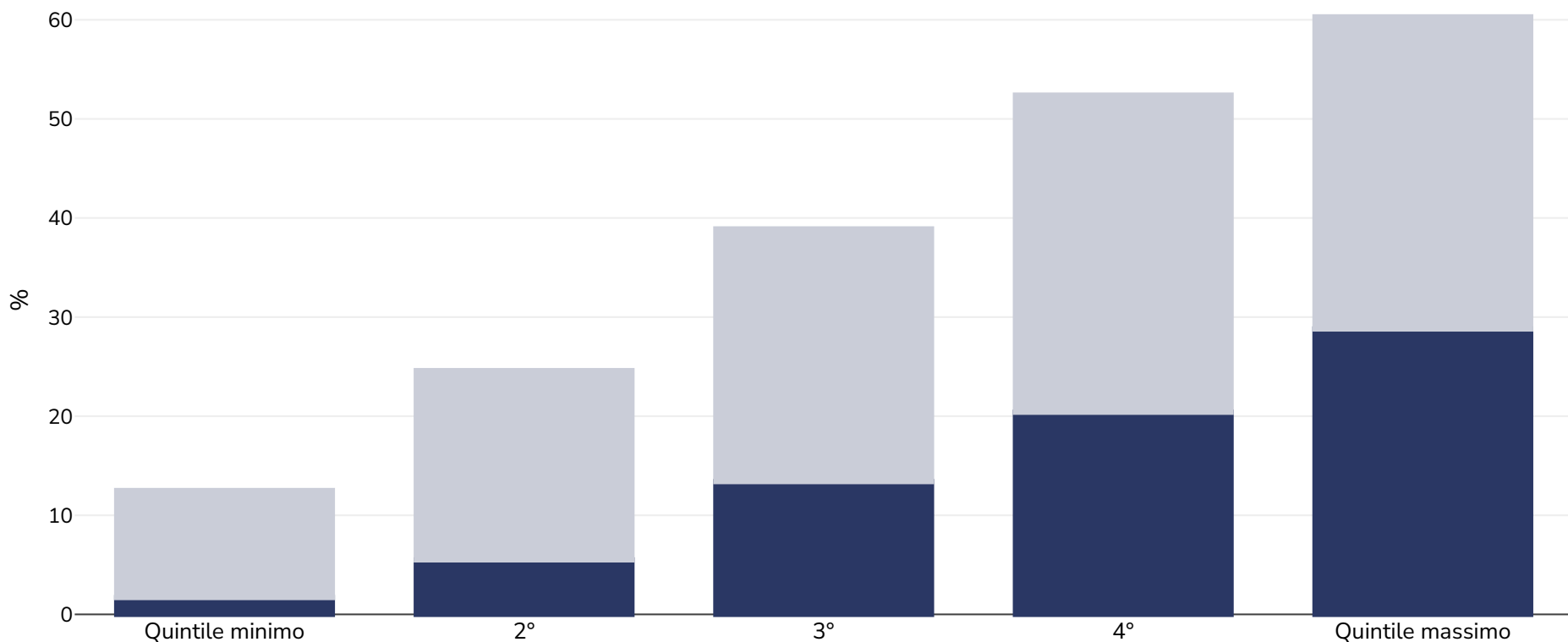


Ghana: Overweight/obesity by socio-economic group

Donne, 2014

■ Obesità ■ Sovrappeso



Tipo di sondaggio: Misurato

Età: 15-49

Dimensioni del campione: 4268

Area coperta: Nazionale

Riferimenti: Ghana Statistical Service - GSS, Ghana Health Service - GHS, and ICF International. 2015. Ghana Demographic and Health Survey 2014. Rockville, Maryland, USA: GSS, GHS, and ICF International.. <http://www.dhsprogram.com/publications/publication-FR307-DHS-Final-Reports.cfm> (last accessed 11th April 2016)

Note (disponibile solo in inglese): Demographic Health Survey data includes ever married women aged 15-49 years only and may include males aged 15-59.

Salvo diversa indicazione, il sovrappeso si riferisce a un BMI compreso tra 25 kg e 29,9 kg/m², l'obesità si riferisce a un BMI superiore a 30 kg/m².