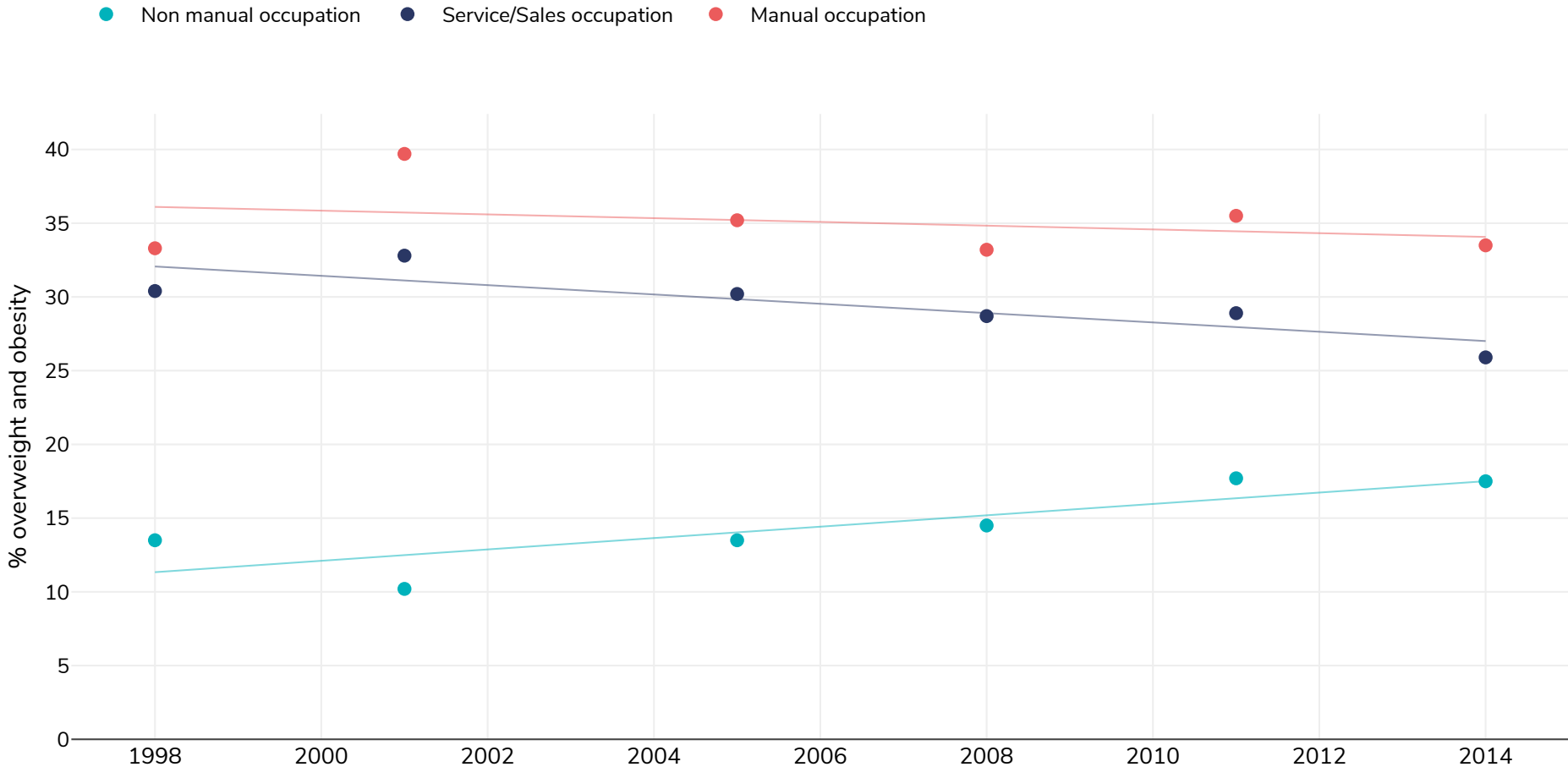


South Korea: % Adults living with obesity, 1998-2014

Women



Survey type: Measured

References: For full details of references visit <https://data.worldobesity.org/>

Notes: 2007-9 (marked as 2008), 2010-2012 (marked as 2011), 2013-15 (marked as 2014)

Unless otherwise noted, overweight refers to a BMI between 25kg and 29.9kg/m², obesity refers to a BMI greater than 30kg/m².

Different methodologies may have been used to collect this data and so data from different surveys may not be strictly comparable. Please check with original data sources for methodologies used.