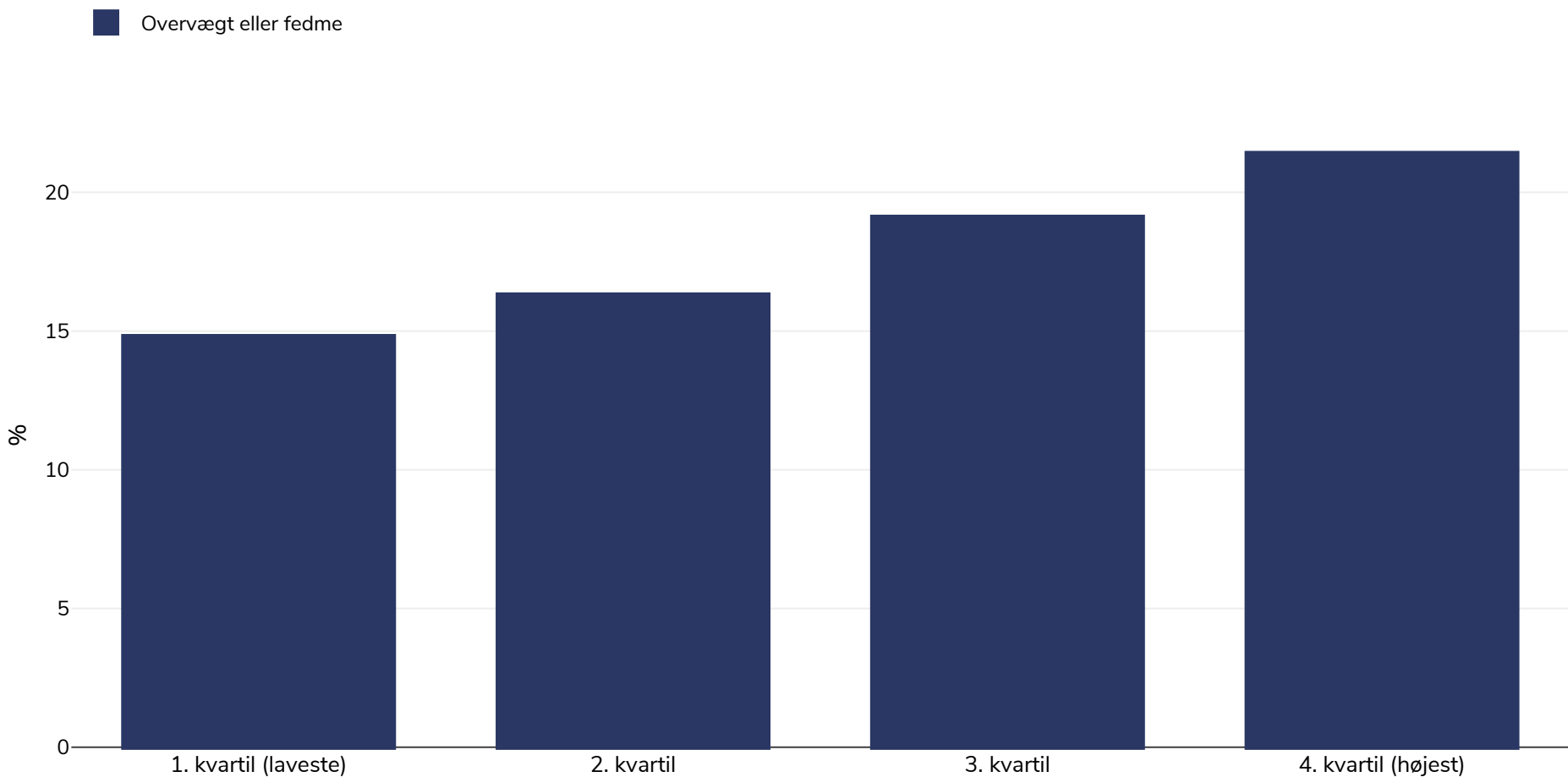


# Kina: Overweight/obesity by socio-economic group

Børn, 2014



<b>Undersøgelsestype:</b>	Målt
<b>Alder:</b>	5-12
<b>Prøvens størrelse:</b>	9917
<b>Area covered:</b>	Regional - Guangzhou (urban setting)
<b>Referencer:</b>	Liu W, Liu W, Lin R, et al. Socioeconomic determinants of childhood obesity among primary school children in Guangzhou, China. BMC Public Health. 2016;16:482. doi:10.1186/s12889-016-3171-1.
<b>Noter (kun tilgængelige på engelsk):</b>	BMI standard deviation scores (BMI z-score) were derived using the age (calculated by subtracting the date of birth from the date of examination) and sex specific WHO growth reference for school-aged children, which were further classified as non-overweight ( $\leq 1SD$ ), overweight ( $> 1SD$ ) and obese ( $> 2SD$ ). Overweight and obesity prevalence by Father's education. Education was categorised into low (primary and junior high school level), medium (senior high and vocational school level) or high (university level or higher).
<b>Cutoffs:</b>	WHO