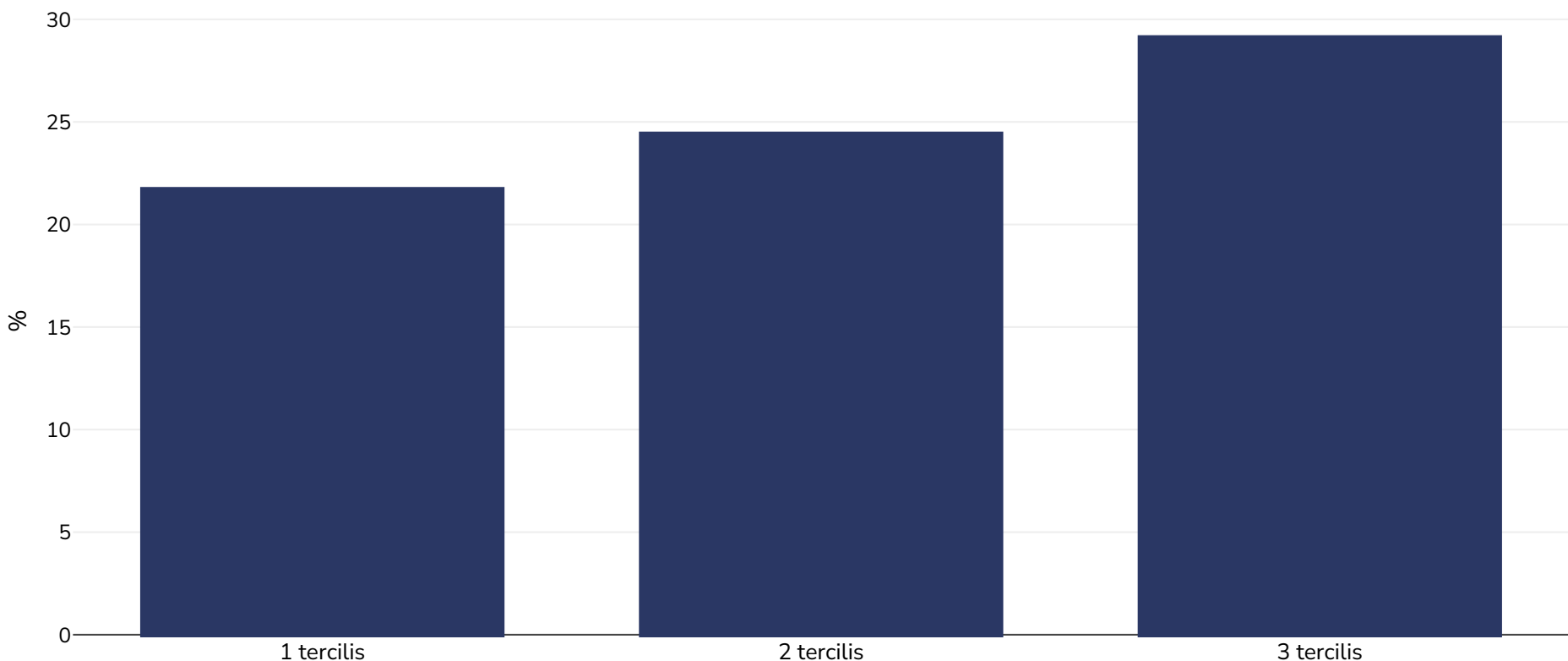


# Brazilija: Overweight/obesity by socio-economic group

Berniukai, 2007

■ Antsvoris arba nutukimas



<b>Tyrimo tipas:</b>	Išmatuotas
<b>Amžius:</b>	7-14
<b>Imties dydis:</b>	2826
<b>Teritorija:</b>	Municipality of Florianópolis
<b>Nuorodos:</b>	Bernardo, Carla de Oliveira, & Vasconcelos, Francisco de Assis Guedes de. (2012). Association of parents' nutritional status, and sociodemographic and dietary factors with overweight/obesity in schoolchildren 7 to 14 years old. <i>Cadernos de Saúde Pública</i> ,28(2), 291-304. Retrieved April 04, 2016, from <a href="http://www.scielosp.org/scielo.php?script=sci_arttext&amp;pid=S0102-311X2012000200008&amp;lng=en&amp;tlng=en">http://www.scielosp.org/scielo.php?script=sci_arttext&amp;pid=S0102-311X2012000200008&amp;lng=en&amp;tlng=en</a> .
<b>Pastabos (tik anglų k.):</b>	Prevalence of obesity based on income (per capita monthly income R\$). 1st tertile: < R\$240.00, 2nd tertile: > R\$240.00 and < R\$500.00, and 3rd tertile: > R\$500.00 For the analyses, the schoolchildren were classified into two groups: not overweight or obese (values equivalent to BMI < 25kg/m2 in adults) and overweight or obese (values equivalent to BMI > 25kg/m2 in adults)
<b>Cutoffs:</b>	Other